

CIAS
CIAS

COMERCIALIZADORA DE INOXIDABLE

C I A S

COMERCIALIZADORA DE INOXIDABLE

SOMOS UNA EMPRESA 100% MEXICANA, DEDICADA A LA COMERCIALIZACIÓN Y DISTRIBUCIÓN DE LOS DIFERENTES DERIVADOS DEL ACERO, FUNDADA EN MARZO DE 2012 CON UNA LÍNEA DE PRODUCTOS LIMITADA, PERO QUE CON EL TIEMPO SE HA DIVERSIFICADO PARA OFRECER UN SERVICIO INTEGRAL A TODOS Y CADA UNO DE NUESTROS CLIENTES, SATISFACIENDO ASÍ SUS NECESIDADES Y A SU VEZ AYUDÁNDOLOS A CUMPLIR SUS OBJETIVOS DENTRO DE LA INDUSTRIA.

C I A S A LO LARGO DE SU TRAYECTORIA HA CONSOLIDADO UN SERVICIO INTEGRAL DE PRODUCTOS DERIVADOS DEL ACERO, CONTANDO CON PROVEEDORES DE LOS MÁS DIVERSOS MATERIALES PARA LA FABRICACIÓN, DESARROLLO Y MANTENIMIENTO DE PROYECTOS INDUSTRIALES PARA LA INDUSTRIA FARMACÉUTICA, DE CONSUMO Y LÍNEAS DE PRODUCCIÓN.

CIAS

COMERCIALIZADORA DE INOXIDABLE

INDICE

LAMINAS	2
PLACAS	3
ANGULOS	4
CODOS	5
ABRAZADERA Y REDUCCION	6
EMPAQUES	7
ADAPTADORES	8
ADAPTADORES Y TUERCAS	9
VALVULAS	10
CODOS	12
REDUCCIONES	14
"Y" GRIEGAS	15
SPRAY BALL Y ESFERAS DE LIMPIEZA	16
MIRILLAS Y SOPORTES	17
TUBERIA DE ACERO INOXIDABLE	18
BRIDAS FORJADAS	20
CONEXIONES SOCKETWELD	22
CONEXIONES ROSCADAS	24
CONEXIONES FUNDIDAS	26

LAMINA

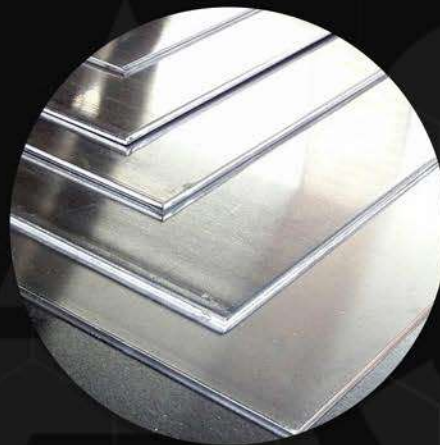


LAMINAS EN 3X10 2B, P3 BA

CALIBRE	kg/PZA	ESPEJOR
10	77	3.43 mm
11	69	3.05 mm
12	60	2.67 mm
14	43	1.90 mm
16	34	1.52 mm
18	28	1.22 mm
20	20	.89 mm
22	17	.74 mm
24	14	0.61 mm

LAMINAS EN 4X10' 2B, P3, BA

CALIBRE	kg/PZA	ESPEJOR
10	102	3.43 mm
11	92	3.05 mm
12	80	2.67 mm
14	57	1.90 mm
16	46	1.52 mm
18	37	1.22 mm
20	27	.89 mm
22	22.5	.74 mm
24	19	0.61 mm

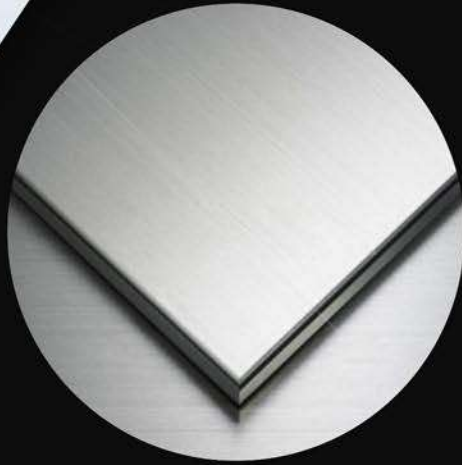


LAMINAS EN 5X10' 2B, P3

CALIBRE	kg/PZA	ESPEJOR
10	127.5	3.43 mm
11	115	3.05 mm
12	100	2.67 mm
14	71.25	1.90 mm
16	57.5	1.52 mm
18	46.25	1.22 mm
20	33.75	.89 mm



PLACAS



PLACA ANTIDERRAPANTE

CALIBRE	kg/PZA	ESPESOR
1/8"	102	3.05
3/16"	150	4.76
1/4"	200	6.35



PLACAS EN ACABADO 1

ESPESOR	mm	MEDIDA	kg/PZA
3/16"	4.76	4X10	145
3/16"	4.76	4X20	290
3/16"	4.76	5X10	181
3/16"	4.76	5X20	362
1/4"	6.35	4X10	195
1/4"	6.35	4X20	390
1/4"	6.35	5X10	245
1/4"	6.35	5X20	490
5/16"	7.94	4X10	240
5/16"	7.94	4X20	480
5/16"	7.94	5X10	300
5/16"	7.94	5X20	600
3/8"	9.52	4X10	300
3/8"	9.52	4X20	600
3/8"	9.52	5X10	375
3/8"	9.52	5X20	740
1/2"	12.7	4X10	390
1/2"	12.7	4X20	780
1/2"	12.7	5X10	490
1/2"	12.7	5X20	980
5/8"	15.74	4X10	477
5/8"	15.74	4X20	954
5/8"	15.74	5X10	597
5/8"	15.74	5X20	1199
3/4"	19.52	4X10	580
3/4"	19.52	4X20	1160
3/4"	19.52	5X10	720
3/4"	19.52	5X20	1440
1"	25.4	4X10	770
1"	25.4	4X20	1540
1"	25.4	5X10	963
1"	25.4	5X20	1926
1 1/4"	31.8	4X10	955
1 1/4"	31.8	4X20	1910
1 1/4"	31.8	5X10	1194
1 1/4"	31.8	5X20	2388
1 1/2 "	38.1	4X10	1150
1 1/2 "	38.1	4X20	2300
1 1/2 "	38.1	5X10	1438
1 1/2 "	38.1	5X20	2876

PREGUNTA POR NUESTROS
CORTES EN PLACA LISA
A LA MEDIDA

ANGULOS

SOLERA CORTADA DE PLACA

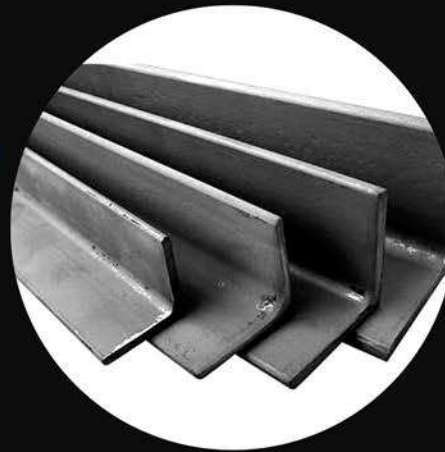
MEDIDAS	kg/PZA	ESPESOR	mm ANCHO
1/8" X 1/2"	0.958	3.05 mm	12.70 mm
1/8" X 3/4"	1.43	3.05 mm	19 mm
1/8" X 1"	1.91	3.05 mm	25.40 mm
1/8" X 1 1/4"	2.39	3.05 mm	31.8 mm
1/8" X 1 1/2"	2.87	3.05 mm	38.10 mm
1/8" X 2"	3.83	3.05 mm	50.80 mm
1/8" X 2 1/2"	4.79	3.05 mm	63.5 mm
1/8" X 3"	5.74	3.05 mm	76.2 mm
1/8" X 4"	7.66	3.05 mm	101.6 mm
1/8" X 6"	11.49	3.05 mm	152.4 mm
3/16" X 1/2"	1.51	4.76 mm	12.70 mm
3/16" X 3/4"	2.26	4.76 mm	19 mm
3/16" X 1"	3.02	4.76 mm	25.40 mm
3/16" X 1 1/4"	3.77	4.76 mm	31.8 mm
3/16" X 1 1/2"	4.53	4.76 mm	38.10 mm
3/16" X 2"	6.04	4.76 mm	50.80 mm
3/16" X 2 1/2"	7.55	4.76 mm	63.5 mm
3/16" X 3"	9.06	4.76 mm	76.2 mm
3/16" X 4"	12.08	4.76 mm	101.6 mm
3/16" X 6"	18.12	4.76 mm	152.4 mm
1/4" X 1/2"	4.02	6.35 mm	12.70 mm
1/4" X 3/4"	3.04	6.35 mm	19 mm
1/4" X 1"	4.06	6.35 mm	25.40 mm
1/4" X 1 1/4"	5.07	6.35 mm	31.8 mm
1/4" X 1 1/2"	6.09	6.35 mm	38.10 mm
1/4" X 2"	8.12	6.35 mm	50.80 mm
1/4" X 2 1/2"	10.15	6.35 mm	63.5 mm
1/4" X 3"	12.18	6.35 mm	76.2 mm
1/4" X 4"	16.25	6.35 mm	101.6 mm
1/4" X 6"	24.36	6.35 mm	152.4 mm

BARRA SOLIDA T304

DIAMETRO	mm	PESO	LARGO
1/8"	3.05 mm	0.23	3.66 mts
3/16"	4.76 mm	0.78	5.20 mts
1/4"	6.35 mm	1.52	6.10 mts
5/16"	7.94 mm	2.4	6.10 mts
3/8"	9.52 mm	3.66	6.10 mts
1/2"	12.70 mm	6.1	6.10 mts
5/8"	15.74 mm	9.76	6.10 mts
3/4"	19.52 mm	13.72	6.10 mts
1"	25.4 mm	24.4	6.10 mts
1 1/4"	31.80 mm	38.125	6.10 mts
1 1/2"	38.10 mm	54.9	6.10 mts
2"	50.8 mm	97.6	6.10 mts

ANGULOS EXTRUIDOS T304

MEDIDA	kg/PZA	ESPESOR
1/8" X 3/4"	6.1	3.05 mm
1/8" X 1"	7.38	3.05 mm
1/8" X 1 1/4"	9.15	3.05 mm
1/8" X 1 1/2"	11.84	3.05 mm
1/8" X 2"	16.47	3.05 mm
3/16" X 1"	10.73	4.76 mm
3/16" X 1 1/4"	13.66	4.76 mm
3/16" X 1 1/2"	16.6	4.76 mm
3/16" X 2"	22.57	4.76 mm
1/4" X 1"	13.73	6.35 mm
1/4" X 1 1/4"	17.44	6.35 mm
1/4" X 1 1/2"	21.594	6.35 mm
1/4" X 2"	24.46	6.35 mm
1/4" X 2 1/2"	37.21	6.35 mm
1/4" X 3"	46.42	6.35 mm
1/4" X 4"	61	6.35 mm
3/8" X 2"	43.432	9.52 mm
3/8" X 3"	67.16	9.52 mm
3/8" X 4"	90.58	9.52 mm



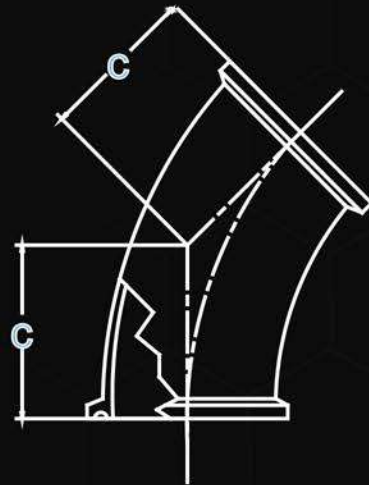
PREGUNTA POR
NUESTRAS BARRAS
HEXAGONALES Y
CUADRADAS



CODOS



CA2K	
CODO 45° C/F. P/A.	
TAMAÑO	C
1"	1 1/8"
1 1/2"	1 7/16"
2"	1 3/4"
2 1/2"	2 1/16"
3"	2 3/8"
4"	3 1/8"
6"	4 15/32"



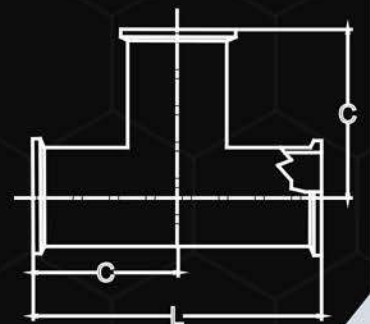
CA2C	
CODO 90° C/F. P/A.	
TAMAÑO	C
1"	2"
1 1/2"	2 3/4"
2"	3 1/2"
2 1/2"	4 1/4"
3"	5"
4"	7 5/8"
6"	10"



TEE

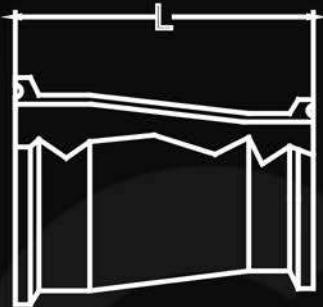


CA7		
TEE CON FERRULAS P/ABRAZADERA		
TAMAÑO	C	L
1"	2 3/8"	4 3/4"
1 1/2"	2 3/4"	5 1/2"
2"	3 1/2"	7"
2 1/2"	3 1/2"	7"
3"	3 3/4"	7 1/2"
4"	4 1/2"	9"
6"	7 1/2"	15"



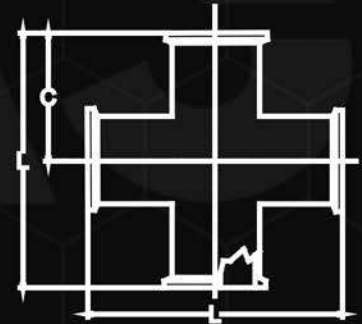
REDUCCIONES

CA3114		
REDUCCIÓN CONCENTRICA CLAMP		
TAMAÑO	L	PARED
1 1/2" x 1"	3"	0.065"
2" x 1"	3"	0.065"
2" x 1 1/2"	3"	0.065"
2 1/2" x 1"	5"	0.065"
2 1/2" x 1 1/2"	5"	0.065"
2 1/2" x 2"	3"	0.065"
3" x 1"	5 29/32"	0.065"
3" x 1 1/2"	7"	0.065"
3" x 2"	5"	0.065"
3" x 2 1/2"	3"	0.065"
4" x 1"	7 1/8"	0.065"
4" x 1 1/2"	7 1/8"	0.065"
4" x 2"	7 1/8"	0.065"
4" x 2 1/2"	7 1/8"	0.065"
4" x 3"	5 1/8"	0.065"
6" x 4"	5 47/64"	0.065"



CA9		
CRUZ CON FERRULAS P/ABRAZADERA		
TAMAÑO	C	L
1"	2 3/8"	4 3/4"
1 1/2"	2 3/4"	5 1/2"
2"	3 1/2"	7"
2 1/2"	3 1/2"	7"
3"	3 3/4"	7 1/2"
4"	4 1/2"	9"

CRUZ



ABRAZADERA



CA13LA	
ABRAZADERA REFORZADA	
TAMAÑO	
1/2"	
3/4"	
1"	
1 1/2"	
2"	
2 1/2"	
3"	
4"	
6"	

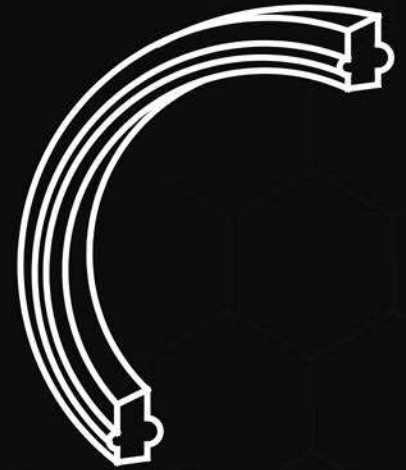


EMPAQUES



EMPAQUES P/ABRAZADERA

TAMAÑO
1"
1 1/2"
2"
2 1/2"
3"
4"
6"



FERRULAS

CA14A7

FERRULA LISA PARA SOLDAR

TAMAÑO	A	B
1"	1 1/8"	0.875"
1 1/2"	1 1/8"	1.370"
2"	1 1/8"	1.870"
2 1/2"	1 1/8"	2.370"
3"	1 1/8"	2.870"
4"	1 1/8"	3.834"
6"	1 1/2"	5.781"



CA14S

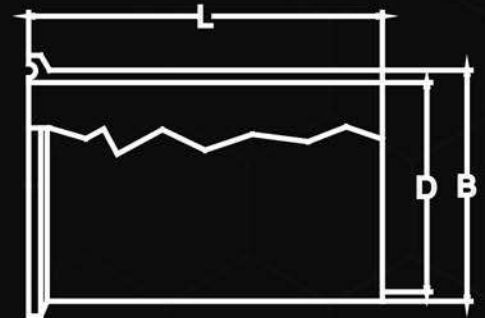
FERRULA LISA PARA SOLDAR (CORTA)

TAMAÑO	D	L
1/2"	0.366"	1/2"
3/4"	0.614"	1/2"
1"	0.875"	1/2"
1 1/2"	1.375"	1/2"
2"	1.870"	1/2"
2 1/2"	2.370"	1/2"
3"	2.834"	1/2"
4"	3.834"	5/8"
6"	5.750"	5/8"

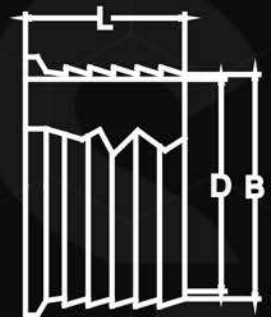


ADAPTADORES

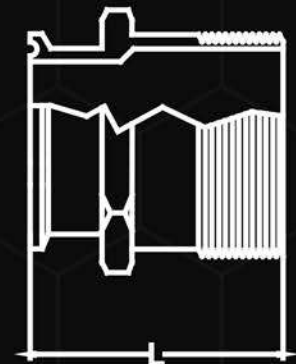
CA14AHT			
ADAPTADOR LISO			
TAMAÑO	B	D	L
1"	1"	0.875"	4 1/2"
1 1/2"	1 1/2"	1.375"	4 1/2"
2"	2"	1.870"	4 1/2"
2 1/2"	2 1/2"	2.370"	4 1/2"
3"	3"	2.834"	4 1/2"
4"	4"	3.834"	5 5/8"



CA14AHR			
ADAPTADOR ESCAMADO			
TAMAÑO	B	D	L
1"	1"	0.875"	2 1/2"
1 1/2"	1 1/2"	1.375"	3"
2"	2"	1.870"	3 1/2"
2 1/2"	2 1/2"	2.370"	4 1/2"
3"	3"	2.834"	4 1/2"
4"	4"	3.834"	4 1/2"



CA21	
ADAPTADOR CLAMP CON ROSCA NPT EXTERIOR	
TAMAÑO	L
1/2" x 1/2"	2.025"
3/4" x 3/4"	2.025"
1" x 1"	2.100"
1 1/2" x 1 1/2"	2.470"
2" x 1"	2.245"
2" x 1 1/2"	2.470"
2" x 2"	2.625"
2 1/2" x 2"	2.625"
2 1/2" x 2 1/2"	3.035"
3" x 3/4"	2.750"
3" x 3"	3.225"
4" x 4"	3.760"



ADAPTADORES



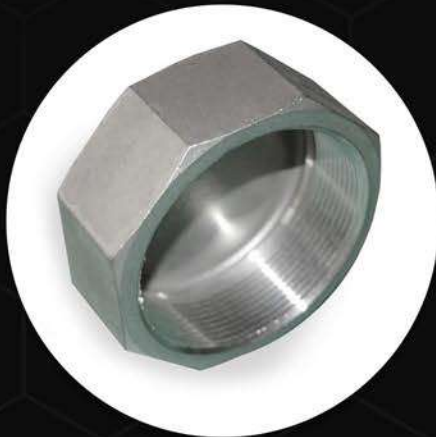
CA22	
ADAPTADOR CLAMP CON ROSCA NPT INTERIOR MACHO Y HEMBRA	
TAMAÑO	L
1/2" x 1/2"	1.370"
3/4" x 3/4"	1.500"
1" x 1"	1.405"
1 1/2" x 1 1/2"	1.718"
2" x 1 1/2"	1.718"
2" x 2"	1.750"
2 1/2" x 1"	1.750"
2 1/2" x 2"	1.750"
3" x 3"	2.218"
4" x 4"	2.468"



TUERCAS



13H		
TUERCA UNION SANITARIA		
TAMAÑO	C	L
1"	1.812"	0.906"
1 1/2"	2.407"	0.968"
2"	3.001"	1.062"
2 1/2"	3.595"	1.187"
3"	4.191"	1.281"
4"	5.420"	1.500"

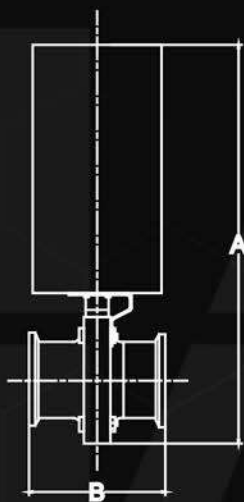
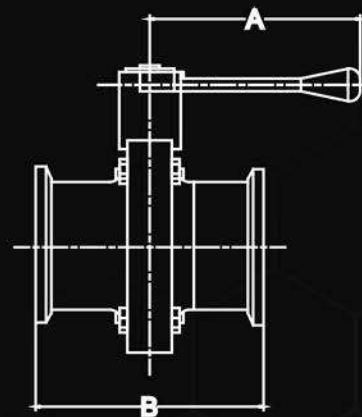


13HT		
TUERCA TAPON SANITARIA		
TAMAÑO	C	L
1"	1.812"	0.906"
1 1/2"	2.407"	0.968"
2"	3.001"	1.062"
2 1/2"	3.595"	1.187"
3"	4.191"	1.281"
4"	5.420"	1.500"

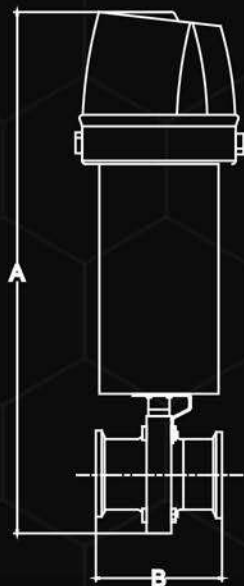
VALVULAS DE MARIPOSA



CA10CMB			
VALVULA DE MARIPOSA			
TAMAÑO	A MANIJA 3 PASOS	A MANIJA DOSIFICADORA	B
1"	4 13/16"	5 27/32"	3"
1 1/2"	4 13/16"	5 27/32"	3"
2"	4 13/16"	5 27/32"	3 1/2"
2 1/2"	5 5/16"	5 27/32"	4"
3"	5 1/2"	5 27/32"	4 1/4"
4"	5 3/4"	5 27/32"	5"
6"	7"	5 27/32"	6"

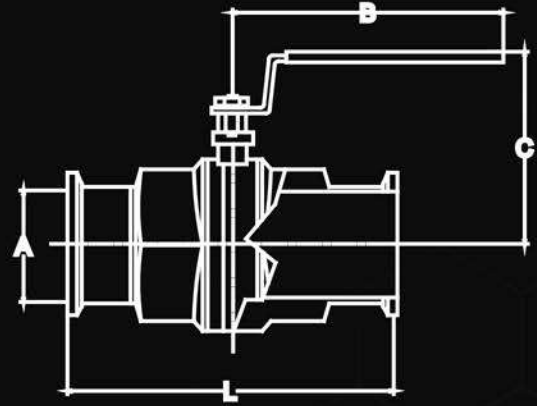


CA10CMBN		
VALVULA DE MARIPOSA C/ACTUADOR		
TAMAÑO	A REF.	B
1"	10 3/8"	3"
1 1/2"	10 5/8"	3"
2"	11 13/32"	3 1/2"
2 1/2"	12 7/32"	4"
3"	13"	4 1/4"
4"	14 13/32"	5"



CA10CMBN		
VALVULA DE MARIPOSA C/ACTUADOR AIRE-MUELLE CON SOLENOIDE		
TAMAÑO	A REF.	B
1"	15 19/64"	3"
1 1/2"	15 35/64"	3"
2"	15 21/64"	3 1/2"
2 1/2"	17 9/64"	4"
3"	17 59/64"	4 1/4"

VALVULAS DE BOLA

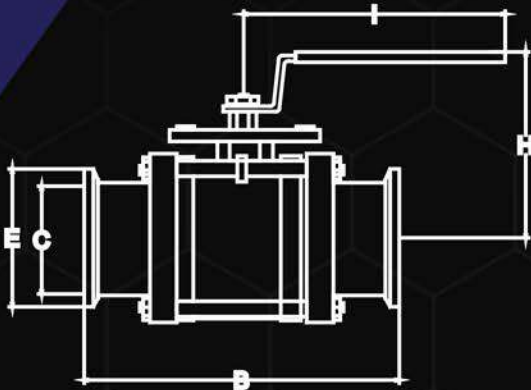


MEDIDA	PESO					PASO	kg	lb	LARGO	ALTO	ANCHO
	A	B	C	D							
1/4"	4.30	1.75	2.61	1.47	0.440	0.660	1.400	5.63	2.64	1.75	
3/8"	4.30	1.71	2.61	1.49	0.440	0.620	1.300	5.63	2.58	1.75	
1/2"	4.30	1.65	2.61	1.51	0.440	0.590	1.300	5.63	2.58	1.75	
3/4"	4.30	1.73	2.83	1.55	0.560	0.800	1.800	5.74	2.74	2.00	
1"	5.75	2.40	3.75	2.17	0.810	1.490	3.300	7.57	3.59	2.38	
1 1/4"	5.86	2.49	4.22	2.35	1.000	2.010	4.400	7.98	3.82	2.63	
1 1/2"	7.13	3.02	4.62	2.89	1.250	3.330	7.300	9.45	4.62	3.19	
2"	7.14	3.15	5.01	3.07	1.500	4.400	9.700	9.65	5.00	3.57	

CA10B 3 PIEZAS

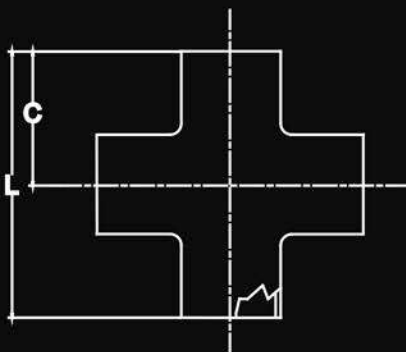
VALVULA DE BOLA DE 2 PIEZAS CON FERRULAS CLAMP PASO COMPLETO

TAMAÑO	B	C	E	H	I
1/2"	3.622"	0.370"	1"	2.362"	4.409"
3/4"	3.622"	0.614"	1"	2.755"	5.433"
1"	4.566"	0.874"	2"	2.755"	5.433"
1 1/2"	5.826"	1.374"	2"	3.700"	8.070"
2"	6.811"	1.870"	2.5"	3.937"	8.070"
2 1/2"	8.267"	2.370"	3.059"	5.905"	12.992"
3"	8"	2.834"	3.574"	6.496"	12.992"
4"	13.070"	3.834"	4.685"	6.889"	13.385"



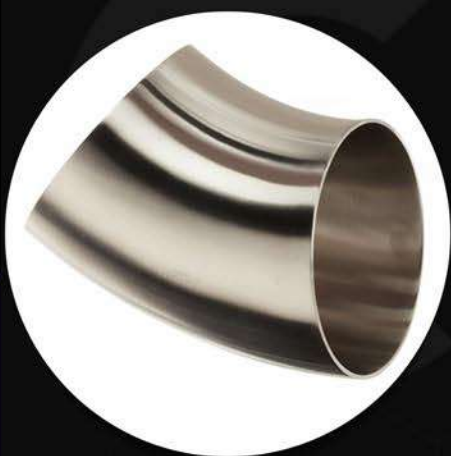
ASIENTO	SELLO DEL CUERPO	SELLO DEL VÁSTAGO
B BUNA	B BUNA	R R-PTFE
T PTFE	T PTFE	
R R-PTFE	M MULTIFIL	
M MULTIFIL	V VITON	M MULTIFIL
I PTFE + INOX.	G - GRAFOIL	
Y DELRIN	S - "S" GASKET	
U UHMWPE		
P PEEK		

CRUZ SOLDABLE



9S		
CRUZ SOLDABLE		
TAMAÑO	C	L
1"	1 7/8"	3 3/4"
1 1/4"	2 1/4"	4 1/2"
1 1/2"	2 1/4"	4 1/2"
2"	3"	6"
2 1/2"	3"	6"
3"	3 1/4"	6 1/2"
4"	3 7/8"	7 3/4"

CODOS



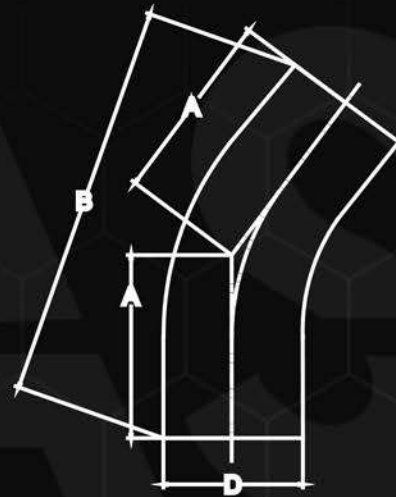
2KS				
CODO 45° CORTO				
TAMAÑO	A	B	D	PARED
TUBO O. D.				
1"	0.621"	1.530"	1"	0.065"
1 1/2"	0.931"	2.296"	1 1/2"	0.065"
2"	1.242"	3.061"	2"	0.065"
2 1/2"	1.553"	3.826"	2 1/2"	0.065"
3"	1.863"	4.592"	3"	0.065"
4"	2.485"	6.122"	4"	0.083"



CODOS



2KSL				
CODO 45° LARGO				
TAMAÑO	A	B	D	PARED
TUBO O. D.				
1"	1.187"	2.576"	1"	0.065"
1 1/4"	1.406"	3.076"	1 1/2"	0.065"
1 1/2"	1.624"	3.576"	2"	0.065"
2"	2.312"	5.038"	2 1/2"	0.065"
2 1/2"	3"	6.5"	3"	0.065"
3"	3.687"	7.961"	4"	0.083"
4"	4.812"	10.423"	4"	0.109"



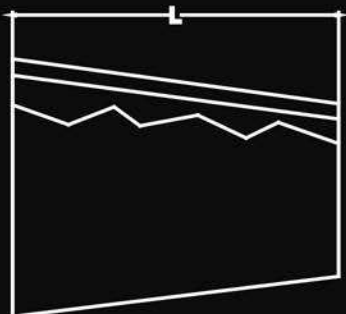
2S

CODO 90° CORTO

TAMAÑO	A	B	D	PARED
TUBO O. D.				
1"	1 1/2"	2"	1"	0.065"
1 1/2"	2 1/4"	3"	1 1/2"	0.065"
2"	3"	4"	2"	0.065"
2 1/2"	3 3/4"	5"	2 1/2"	0.065"
3"	4 1/2"	6"	3"	0.065"
4"	6"	8"	4"	0.083"
6"	9"	12"	6"	0.109"



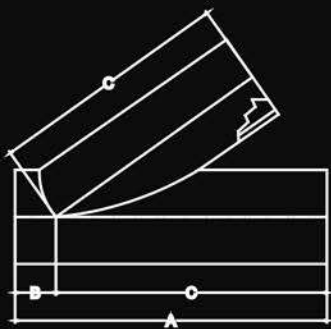
REDUCCIONES



31W		
REDUCCIÓN CONCENTRICA SOLDABLE		
TAMAÑO	L	PARED
1" x 1/2"	1 1/2"	0.065"
1" x 3/4"	1 3/4"	0.065"
1 1/2" x 1/2"	2"	0.065"
1 1/2" x 1"	2"	0.065"
2" x 1"	2"	0.065"
2" x 1 1/2"	2"	0.065"
2 1/2" x 1"	4"	0.065"
2 1/2" x 1 1/2"	4"	0.065"
2 1/2" x 2"	2"	0.065"
3" x 1"	4 29/32"	0.065"
3" x 1 1/2"	6"	0.065"
3" x 2"	4"	0.065"
3" x 2 1/2"	2"	0.065"
4" x 1 1/2"	6"	0.083"
4" x 2"	6"	0.083"
4" x 2 1/2"	6"	0.083"
4" x 3"	4"	0.083"
6" x 2"	6"	0.109"
6" x 2 1/2"	6"	0.109"
6" x 3"	6"	0.109"
6" x 4"	4 1/4"	0.109"

32W		
REDUCCIÓN EXCENTRICA SOLDABLE		
TAMAÑO	L	PARED
1" x 1 1/2"	1 1/2"	0.065"
1 1/2" x 1"	2"	0.065"
2" x 1 1/2"	2"	0.065"
2 1/2" x 1 1/2"	4"	0.065"
2 1/2" x 2"	2"	0.065"
3" x 1"	4 29/32"	0.065"
3" x 1 1/2"	6"	0.065"
3" x 2"	4"	0.065"
3" x 2 1/2"	2"	0.065"
4" x 1"	6"	0.083"
4" x 1 1/2"	6"	0.083"
4" x 2"	6"	0.083"
4" x 2 1/2"	6"	0.083"
4" x 3"	4"	0.083"
6" x 3"	6"	0.109"
6" x 4"	4 1/4"	0.109"

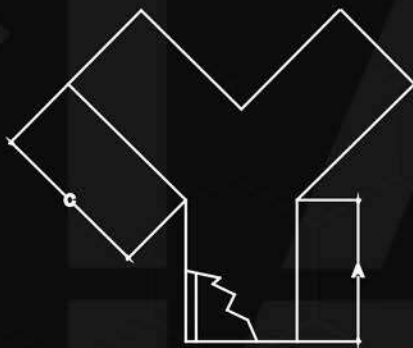
"Y" GRIEGAS



28S-45

Y C/EXTREMOS SOLDABLES 45°

TAMAÑO	A	B	D
1"	4 3/16"	1 3/16"	3"
1 1/2"	5 3/8"	1 5/16"	4 1/16"
2"	6 7/16"	1 7/16"	5"
2 1/2"	7 3/4"	1 5/8"	6 1/8"
3"	9 1/8"	2 1/4"	6 7/8"

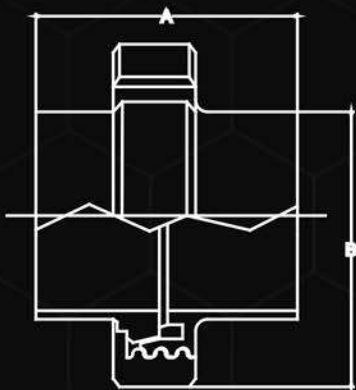


28S-90

Y C/EXTREMOS SOLDABLES 90°

TAMAÑO	A	C
1"	1 1/2"	1.937"
1 1/2"	2"	2.437"
2"	2 5/8"	3.252"
2 1/2"	3 3/8"	4.126"
3"	4"	4.874"
4"	5 3/8"	6.563"

UNION COMPLETA

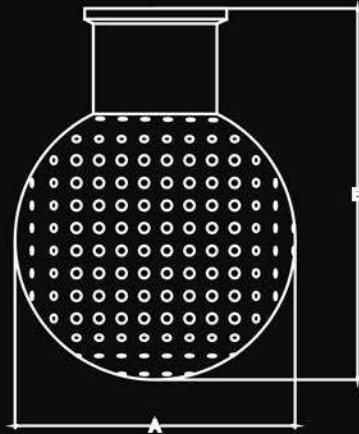


12HSDN

CONECCIÓN COMPLETA ROSCADA DIN

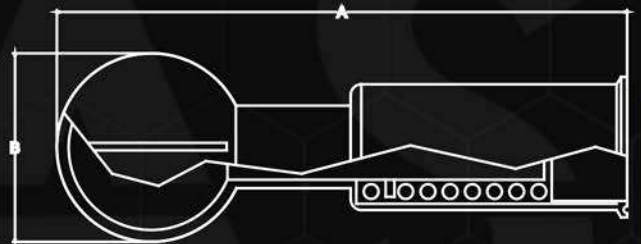
TAMAÑO	A	B
25	44	63
40	52	78
50	56	92
65	64	112
80	74	127
100	88	148

SPRAY BALL

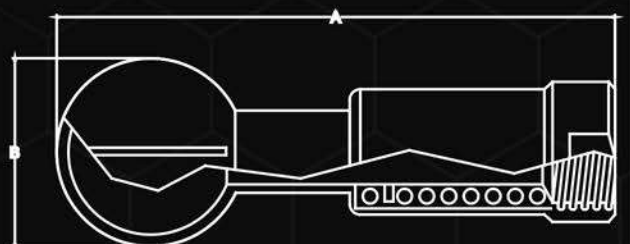


SPRAY BALL		
BOLA DIFUSORA CLAMP		
TAMAÑO	A	B
1 1/2"	2.440"	3"
2"	2.952"	3.385"

ESFERAS DE LIMPIEZA

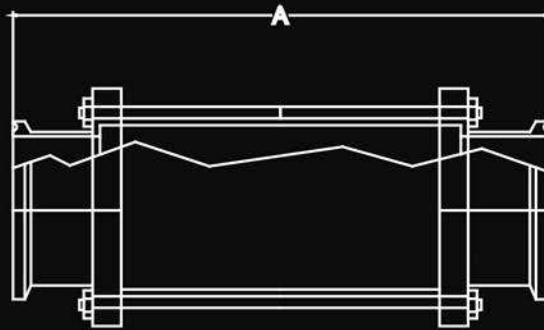


ESFERA DE LIMPIEZA		
ESFERA ROTATIVA DE LIMPIEZA CLAMP		
TAMAÑO	A	B
1 1/2"	5.433"	2.086"
2"	6.614"	2.480"



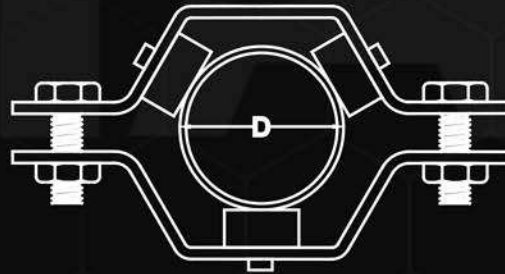
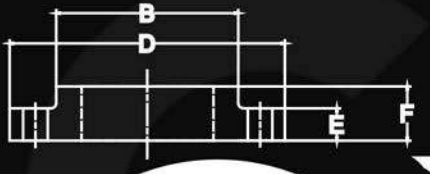
ESFERA DE LIMPIEZA			
ESFERA ROTATIVA DE LIMPIEZA ROSCADA			
TAMAÑO	A	B	C
1 1/2"	5.51"	2.090"	1"
2"	6.300"	2.476"	1.5"

MIRILLAS



CA-496		
MIRRILLA CLAMP		
TAMAÑO	LARGAS	CORTAS
	A	A
1"	7 1/2"	5 3/4"
1 1/2"	7 1/2"	5 3/4"
2"	7 1/2"	5 3/4"
2 1/2"	10"	7 1/4"
3"	10"	7 1/4"
4"	10"	7 1/2"

BRIDAS



SOPORTES

24S	
SOPORTE PARA TUBERIA	
SOLDABLE	
TAMAÑO	D
TUBO O. D.	
1/2"	1/2"
3/4"	3/4"
1"	1"
1 1/2"	1 1/2"
2"	2"
2 1/2"	2 1/2"
3"	3"
4"	4"
6"	6"

BS

BRIDA SLIP ON SANITARIA DE ACERO INOXIDABLE T-304 Y T-316

TAMAÑO	D	B	C	FD	E	F	NO. BARRENOS	DIAMETRO BARRENOS
1"	1.015"	1 15/16"	3 1/8"	4 1/4"	3/8"	9/16"	4	5/8"
1 1/2"	1.515"	2 9/16"	3 7/8"	5"	3/8"	5/8"	4	5/8"
2"	2.015"	3 1/16"	4 3/4"	6"	7/16"	3/4"	4	3/4"
2 1/2"	2.515"	3 9/16"	5 1/2"	7"	7/16"	3/4"	4	3/4"
3"	3.015"	4 1/4"	6"	7 1/2"	7/16"	7/8"	4	3/4"
4"	4.015"	5 5/16"	7 1/2"	9"	1/2"	7/8"	8	3/4"
6"	6.020"	7 3/4"	9 1/2"	11"	1/2"	7/8"	8	3/4"

TUBERIA



TUBERIA "PIPE" ATSM-A-312					
CEDULA 10 S			CEDULA 40 S Y ESTANDAR		
WT					
DIAMETRO NOMINAL	DIAMETRO EXTERIOR	ESPESOR	DIAMETRO INTERIOR	ESPESOR	DIAMETRO INTERIOR
1/8	0.405	0.049	0.307	0.068	0.269
1/4	0.540	0.065	0.410	0.088	0.364
3/8	0.675	0.065	0.545	0.091	0.493
1/2	0.840	0.083	0.674	0.109	0.622
3/4	1.050	0.083	0.884	0.113	0.824
1	1.315	0.109	1.097	0.133	1.049
1 1/4	1.660	0.109	1.442	0.140	1.380
1 1/2	1.900	0.109	1.682	0.145	1.610
2	2.375	0.109	2.153	0.154	2.067
2 1/2	2.875	0.120	2.635	0.203	2.469
3	3.500	0.120	3.260	0.216	3.068
3 1/2	4.000	0.120	3.760	0.226	3.548
4	4.500	0.120	4.260	0.237	4.026
5	5.563	0.134	5.295	0.258	5.047
6	6.625	0.134	6.357	0.280	6.065
8	8.625	0.148	8.329	0.322	7.981
10	10.750	0.165	10.420	0.365	10.020
12	12.750	0.180	12.390	0.375	12.000
14	14.000	0.188	13.624	0.375	13.250
16	16.000	0.188	15.624	0.375	15.250
18	18.000	0.188	17.624	0.375	17.250
20	20.000	0.218	19.564	0.375	19.250
24	24.000	0.250	23.500	0.375	23.250

TUBERIA EN CALIBRE ASTM 269-270-554 (DIMENSIONES Y PESOS)																	
O.D	0.510	0.560	0.635	0.711	0.813	0.890	1.07	1.240	1.470	1.650	1.830	2.110	2.410	2.770	3.050	3.400	3.760
	mm.	mm.	mm.	mm.	mm.	mm.	mm.	mm.	mm.	mm.	mm.	mm.	mm.	mm.	mm.	mm.	mm.
DIA. EXT	25	24	23	22	21	20	19	18	17	16	15	14	13	12	11	10	9
PULGADAS	0,020	0,022	0,025	0,028	0,032	0,035	0,042	0,049	0,058	0,065	0,072	0,083	0,095	0,109	0,120	0,134	0,148
3/8"	0.113	0.128	0.139	0.154	0.174	0.189	0.222	0.254	0.292	0.320	0.347	0.385	0.423	0.461	0.486	0.513	0.534
1/2"	0.153	0.167	0.189	0.210	0.238	0.259	0.306	0.351	0.407	0.449	0.490	0.550	0.611	0.677	0.725	0.779	0.828
3/4"	0.232	0.255	0.288	0.321	0.365	0.398	0.473	0.546	0.638	0.708	0.776	0.880	0.989	1.110	1.201	1.312	1.416
1"	0.311	0.342	0.387	0.433	0.492	0.537	0.639	0.741	0.826	0.966	1.062	1.210	1.366	1.543	1.678	1.844	2.004
1 1/4"	0.378	0.415	0.470	0.525	0.619	0.676	0.806	0.935	1.099	1.224	1.348	1.539	1.744	1.976	2.155	2.376	2.592
1 1/2"	0.470	0.517	0.586	0.655	0.747	0.815	0.973	1.130	1.329	1.482	1.634	1.869	2.122	2.409	2.632	2.909	3.180
2"		0.692	0.785	0.877	1.001	1.093	1.307	1.519	1.790	1.998	2.207	2.528	2.876	3.275	3.585	3.973	4.365
2 1/2"				1.100	1.255	1.371	1.641	1.909	2.251	2.515	2.778	3.139	3.631	4.141	4.538	5.038	5.532
3"						1.649	1.975	2.297	2.711	3.031	3.351	3.848	4.385	5.007	5.492	6.104	6.708
4"								3.077	3.634	4.065	4.494	5.166	5.895	6.741	7.400	8.233	9.060
6"														9.900			

PTR Y RECTANGULAR

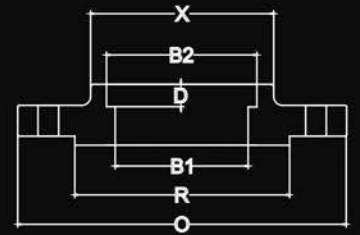
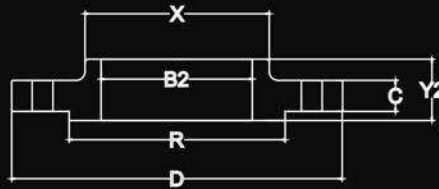
TUBO PTR Y RECTANGULAR				CALIBRE				
TAMAÑO				18	16	14	12	11
				ESPESOR				
				1.2	1.6	2	2.7	3
A (Pulg)	B (Pulg)	A (mm)	B (mm)	PESO kg/m				
1/2"	1/2"	12.7	12.7	0.389	0.530	-	-	-
3/4"	3/4"	19.1	19.1	0.7	-	-	-	-
1"	1"	25.4	25.4	0.966	1.269	-	-	-
1 1/4"	1 1/4"	31.7	31.7	1.217	1.603	-	-	-
1 1/2"	1 1/2"	38.1	38.1	1.468	1.937	-	-	-
2"	2"	50.8	50.8	1.971	2.606	-	-	-
1"	-	25.4	19.1	-	-	1.285	-	-
1 1/2"	-	38.1	25.4	1.217	1.603	2.025	-	2.856
2"	1"	50.8	25.4	1.468	1.937	2.453	-	-
3"	2"	76.2	50.8	-	-	-	-	5.945

DIN EN 10357 (DIN 11850)		
NW	TAMAÑO	PESO kg/m
25	29 x 1.5	0.995
40	41 x 1.5	1.446
50	53 x 1.5	1.897
65	70 x 2	3.405
80	85 x 2	4.156
100	104 x 2	5.108
125	129 x 2	6.36
150	154 x 2	7.621
200	204 x 2	9.984



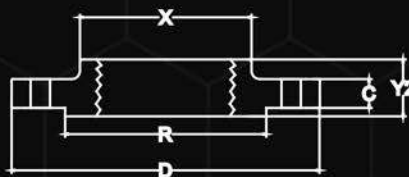
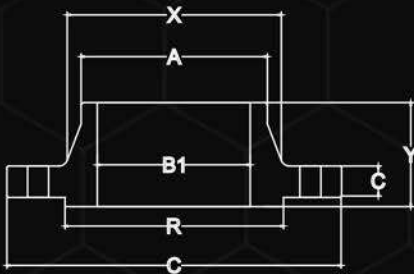
TUBO TAMAÑOS ESPECIALES	
ORNAMENTAL NORMA ASTM A554	
TAMAÑO	CALIBRES
15 mm	16
15.8 mm	16, 18
22.2 mm	16, 18
28.5 mm	16, 18
30 mm	16
41.2 mm	16, 18
44.45 mm	16, 18
54 mm	14

BRIDAS FORJADAS

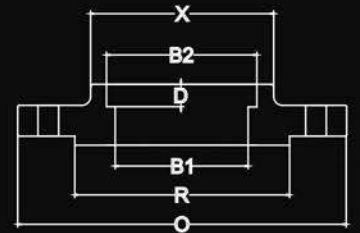
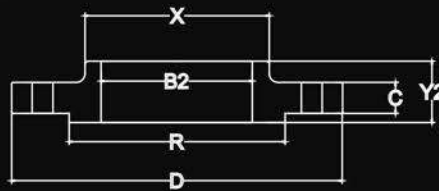


BRIDAS FORJADAS 300 LIBRAS ASTM A182 ANSI B16.5

Nominal Size	Common Dimensions			Bore			Length Through Hub					Drilling					
	Outside Dia.	Thk.	Raised Face Dia.	Hub Dia.	Welding Neck Socket	Slip-On Socket	Lap Joint	Welding Neck Socket	Slip-On Socket	Lap Joint	Min. Thread Length	Depth of Socket	Dia. of Hub at Bevel	Filet Radius	Bolt Circle	Dia. Holes	No. Holes
Inch.	Inch.	Inch.	Inch.	Inch.	Inch.	Inch.	Inch.	Inch.	Inch.	Inch.	Inch.	Inch.	Inch.	Inch.	Inch.	Inch.	Inch.
1/2	3.75	0.56	1.38	1.50	0.62	0.88	0.90	2.06	0.88	0.88	0.63	0.38	0.84	0.13	2.63	0.63	4
3/4	4.63	0.63	1.69	1.88	0.82	1.09	1.11	2.25	1.00	1.00	0.63	0.44	1.05	0.13	3.25	0.75	4
1	4.88	0.69	2.00	2.13	1.05	1.36	1.38	2.44	1.06	1.06	0.69	0.50	1.32	0.13	3.50	0.75	4
1 1/4	5.25	0.75	2.50	2.50	1.38	1.70	1.72	2.56	1.06	1.06	0.81	0.56	1.66	0.19	3.88	0.75	4
1 1/2	6.13	0.81	2.88	2.75	1.61	1.95	1.97	2.69	1.19	1.19	0.88	0.63	1.90	0.25	4.50	0.88	4
2	6.50	0.88	3.63	3.31	2.07	2.44	2.46	2.75	1.31	1.31	1.13	0.69	2.38	0.31	5.00	0.75	8
2 1/2	7.50	1.00	4.13	3.94	2.47	2.94	2.97	3.00	1.50	1.50	1.25	0.75	2.88	0.31	5.88	0.88	8
3	8.25	1.13	5.00	4.63	3.07	3.57	3.60	3.13	1.69	1.69	1.25	0.81	3.50	0.38	6.63	0.88	8
3 1/2	9.00	1.19	5.50	5.25	3.55	4.07	4.10	3.19	1.75	1.75	1.44	-	4.00	0.38	7.25	0.88	8
4	10.00	1.25	6.19	5.75	4.03	4.57	4.60	3.38	1.88	1.88	1.44	-	4.50	0.44	7.88	0.88	8
5	11.00	1.38	7.31	7.00	5.05	5.66	5.69	3.88	2.00	2.00	1.69	-	5.56	0.44	9.25	0.88	8
6	12.50	1.44	8.50	8.13	6.07	6.72	6.75	3.88	2.06	2.06	1.81	-	6.63	0.50	10.63	0.88	12
8	15.00	1.63	10.63	10.25	7.98	8.72	8.75	4.38	2.44	2.44	2.00	-	8.63	0.50	13.00	1.00	12
10	17.50	1.88	12.75	12.63	10.02	10.88	10.92	4.63	2.63	3.75	2.19	-	10.75	0.50	15.25	1.13	16
12	20.50	2.00	15.00	14.75	12.00	12.88	12.92	5.13	2.88	4.00	2.38	-	12.75	0.50	17.75	1.25	16
14	23.00	2.13	16.25	16.75	13.25	14.14	14.18	5.63	3.00	4.38	2.50	-	14.00	0.50	20.25	1.25	20
16	25.50	2.25	18.50	19.00	15.25	16.16	16.19	5.75	3.25	4.75	2.69	-	16.00	0.50	22.50	1.38	20
18	28.00	2.38	21.00	21.00	17.25	18.18	18.20	6.25	3.50	5.13	2.75	-	18.00	0.50	24.75	1.38	24
20	30.50	2.50	23.00	23.13	19.25	20.20	20.25	6.38	3.75	5.50	2.88	-	20.00	0.50	27.00	1.38	24
22	33.00	2.63	25.25	25.25	21.25	22.22	22.25	6.50	4.00	5.75	3.13	-	24.00	0.50	29.25	1.63	24
24	36.00	2.75	27.25	27.63	23.25	24.25	24.25	6.63	4.19	6.00	3.25	-	24.00	0.50	32.00	1.63	24

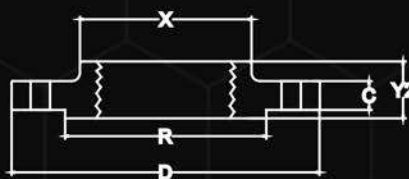
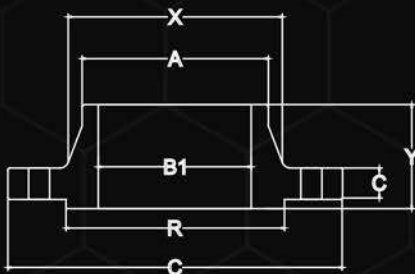


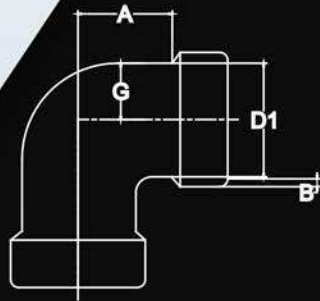
BRIDAS FORJADAS



BRIDAS FORJADAS 150 LIBRAS ASTM A182 ANSI B16.5

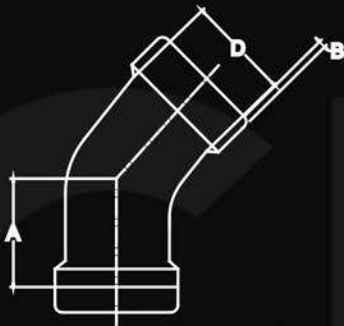
Nominal Size	Common Dimensions			Hub Dia.	Welding			Length Through Hub			Depth of Socket	Dia. Hub at Bevel	Filet Radius	Bolt Circle	Drilling	
	Outside Dia.	Thk.	Raised Face		Neck Socket	Slip-On Socket	Lap Joint	Welding Neck	Slip-On Socket	Lap Joint					Dia.	No. Holes
Inch.	Inch.	Inch.	Inch.	Inch.	Inch.	Inch.	Inch.	Inch.	Inch.	Inch.	Inch.	Inch.	Inch.	Inch.	Inch.	Inch.
1/2	3.50	0.44	1.38	1.19	0.62	0.88	0.90	1.88	0.63	0.63	0.38	0.84	0.13	2.38	0.63	4
3/4	3.88	0.50	1.69	1.50	0.82	1.09	1.11	2.06	0.63	0.63	0.44	1.05	0.13	2.75	0.63	4
1	4.25	0.56	2.00	1.94	1.05	1.36	1.38	2.19	0.69	0.69	0.50	1.32	0.13	3.13	0.63	4
1 1/4	4.63	0.63	2.50	2.31	1.38	1.70	1.72	2.25	0.81	0.81	0.56	1.66	0.19	3.50	0.63	4
1 1/2	5.00	0.69	2.88	2.56	1.61	1.95	1.97	2.44	0.88	0.88	0.63	1.90	0.25	3.88	0.63	4
2	6.00	0.75	3.63	3.06	2.07	2.44	2.46	2.50	1.00	1.00	0.69	2.38	0.31	4.75	0.75	4
2 1/2	7.00	0.88	4.13	3.56	2.47	2.94	2.97	2.75	1.13	1.13	0.75	2.88	0.31	5.50	0.75	4
3	7.50	0.94	5.00	4.25	3.07	3.57	3.60	2.75	1.19	1.19	0.81	3.50	0.38	6.00	0.75	4
3 1/2	8.50	0.94	5.50	4.81	3.55	4.07	4.10	2.81	1.25	1.25	0.88	4.00	0.38	7.00	0.75	8
4	9.00	0.94	6.19	5.31	4.03	4.57	4.60	3.00	1.31	1.31	0.94	4.50	0.44	7.50	0.75	8
5	10.00	0.94	7.31	6.44	5.05	5.66	5.69	3.50	1.44	1.44	0.94	5.56	0.44	8.50	0.88	8
6	11.00	1.00	8.50	7.56	6.07	6.72	6.75	3.50	1.56	1.56	1.06	6.63	0.50	9.50	0.88	8
8	13.50	1.13	10.63	9.69	7.98	8.72	8.75	4.00	1.75	1.75	1.25	8.63	0.50	11.75	0.88	8
10	16.00	1.19	12.75	12.00	10.02	10.88	10.92	4.00	1.94	1.94	1.31	10.75	0.50	14.25	1.00	12
12	19.00	1.25	15.00	14.38	12.00	12.88	12.92	4.50	2.19	2.19	1.56	12.75	0.50	17.00	1.00	12
14	21.00	1.38	16.25	15.75	13.25	14.14	14.18	5.00	2.25	3.13	1.63	14.00	0.50	18.75	1.13	12
16	23.50	1.44	18.50	18.00	15.25	16.16	16.19	5.00	2.50	3.44	1.75	16.00	0.50	21.25	1.13	16
18	25.00	1.56	21.00	19.88	17.25	18.18	18.20	5.50	2.69	3.81	1.94	18.00	0.50	22.75	1.25	16
20	27.50	1.69	23.00	22.00	19.25	20.20	20.25	5.69	2.88	4.06	2.13	20.00	0.50	25.00	1.25	20
22	29.50	1.81	25.25	24.25	21.25	22.22	22.25	5.88	3.13	4.25	2.38	22.00	0.50	27.25	1.38	20
24	32.00	1.88	27.25	26.13	23.25	24.25	24.25	6.00	3.25	4.38	2.50	24.00	0.50	29.50	1.38	20





CODO 90°

Nom.	Depth		C	G	D	A	Weigth	AISI	AISI
Pipe Size	B mm.	of socket	mm.	mm.	mm.	mm.	kg/pce	304L	316L
1/4"	14.10	9.53	3.30	3.02	8.86	11.11	0.09	•	•
3/8"	17.53	9.53	3.51	3.20	12.14	13.49	0.13	•	•
1/2"	21.72	9.53	4.09	3.73	15.42	15.88	0.25	•	•
3/4"	27.05	12.70	4.27	3.91	20.55	19.05	0.32	•	•
1"	33.78	12.70	4.98	4.55	26.26	22.23	0.52	•	•
1 1/4"	42.55	12.70	5.28	4.85	34.67	26.99	0.86	•	•
1 1/2"	48.64	12.70	5.54	5.08	40.51	31.75	1.12	•	•
2"	61.11	15.88	6.50	5.54	52.12	38.10	1.80	•	•

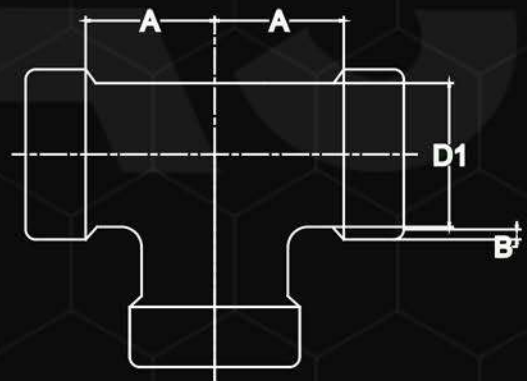


CODO 45°

Nom.	Depth		C	G	D	A	Weigth	AISI	AISI
Pipe Size	B mm.	of socket	mm.	mm.	mm.	mm.	kg/pce	304L	316L
1/4"	14.10	9.53	3.30	3.02	8.86	7.94	0.08	•	•
3/8"	17.53	9.53	3.51	3.20	12.14	7.94	0.13	•	•
1/2"	21.72	9.53	4.09	3.73	15.42	11.11	0.18	•	•
3/4"	27.05	12.70	4.27	3.91	20.55	12.70	0.30	•	•
1"	33.78	12.70	4.98	4.55	26.26	14.29	0.45	•	•
1 1/4"	42.55	12.70	5.28	4.85	34.67	17.46	0.75	•	•
1 1/2"	48.64	12.70	5.54	5.08	40.51	20.64	0.90	•	•
2"	61.11	15.88	6.50	5.54	52.12	25.40	1.30	•	•

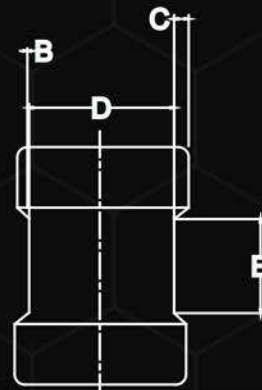
TEE RECTA

Nom.	Depth		C	G	D	A	Weigth	AISI	AISI
Pipe Size	B mm.	of socket	mm.	mm.	mm.	mm.	kg/pce	304L	316L
1/4"	14.10	9.53	3.30	3.02	8.86	11.11	0.11	•	•
3/8"	17.53	9.53	3.51	3.20	12.14	13.49	0.16	•	•
1/2"	21.72	9.53	4.09	3.73	15.42	15.88	0.34	•	•
3/4"	27.05	12.70	4.27	3.91	20.55	19.05	0.41	•	•
1"	33.78	12.70	4.98	4.55	26.26	22.23	0.65	•	•
1 1/4"	42.55	12.70	5.28	4.85	34.67	26.99	0.95	•	•
1 1/2"	48.64	12.70	5.54	5.08	40.51	31.75	1.33	•	•
2"	61.11	15.88	6.50	5.54	52.12	38.10	2.20	•	•

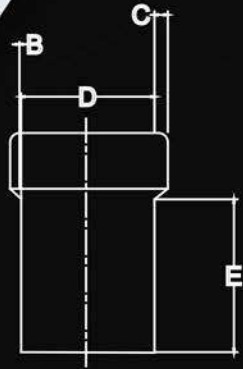


COUPLE

Nom.	Depth		C	D	E	Weigth	AISI	AISI
Pipe Size	B mm.	of socket	mm.	mm.	mm.	kg/pce	304L	316L
1/4"	14.10	9.53	3.30	8.86	6.35	0.05	•	•
3/8"	17.53	9.53	3.51	12.14	6.35	1.10	•	•
1/2"	21.72	9.53	4.09	15.42	9.53	0.14	•	•
3/4"	27.05	12.70	4.27	20.55	9.53	0.20	•	•
1"	33.78	12.70	4.98	26.26	12.70	0.30	•	•
1 1/4"	42.55	12.70	5.28	34.67	12.70	0.45	•	•
1 1/2"	48.64	12.70	5.54	40.51	12.70	0.60	•	•
2"	61.11	15.88	6.50	52.12	19.05	0.95	•	•

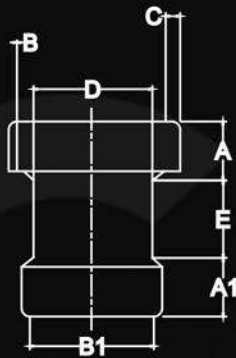


CONEXIONES SOCKETWELD 3000 LIBRAS



MEDIO COPLÉ

Nom.	Depth							
Pipe	B	of	C	D	E	Weigth	AISI	AISI
Size	mm.	socket	mm.	mm.	mm.	kg/pce	304L	316L
1/4"	14.10	9.53	3.30	8.86	15.88	0.06	•	•
3/8"	17.53	9.53	3.51	12.14	17.46	0.11	•	•
1/2"	21.72	9.53	4.09	15.42	22.23	0.15	•	•
3/4"	27.05	12.70	4.27	20.55	23.81	0.21	•	•
1"	33.78	12.70	4.98	26.26	28.58	0.35	•	•
1 1/4"	42.55	12.70	5.28	34.67	30.16	0.50	•	•
1 1/2"	48.64	12.70	5.54	40.51	31.75	0.65	•	•
2"	61.11	15.88	6.50	52.12	41.28	1.10	•	•

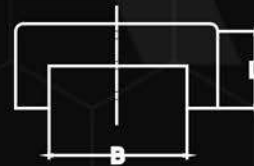


COPLÉ REDUCIDO

Nom.								
Pipe	B	B1	A	A1	C	D	E	Weigth
Size	mm.	socket	mm.	mm.	mm.	mm.	mm.	kg/pce
3/8 - 1/4	17.53	14.10	10.00	10.00	3.51	8.86	6.35	0.08
1/2 - 3/8	21.72	17.53	10.00	10.00	4.09	12.14	9.53	0.12
3/4 - 1/2	27.05	21.72	12.70	9.50	4.27	15.42	12.70	0.20
1 - 1/4"	33.78	27.05	12.70	12.70	4.98	20.55	12.70	0.30
1 1/4 - 1"	42.55	33.78	13.00	10.00	5.28	26.26	12.70	0.40
1 1/2 - 1"	48.64	33.78	13.00	10.00	5.54	34.67	12.70	0.50
1/2 - 1 1/2"	48.64	42.55	13.00	10.00	5.54	34.67	12.70	0.55
2 - 1 1/2"	61.11	48.64	15.90	12.70	6.50	40.51	22.23	0.95

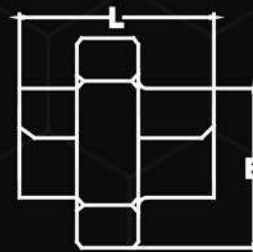
TAPON CAPA

Nom.	Depth				
Pipe	B	of	L	Weigth	AISI
Size	mm.	socket	mm.	kg/pce	316L
1/4"	14.10	11.11	19.05	0.06	•
3/8"	17.53	11.11	19.05	0.07	•
1/2"	21.72	12.70	22.23	0.14	•
3/4"	27.05	14.29	25.40	0.16	•
1"	33.78	15.88	26.99	0.30	•
1 1/4"	42.55	17.46	30.16	0.45	•
1 1/2"	48.64	19.05	31.75	0.55	•
2"	61.11	22.23	38.10	1.00	•

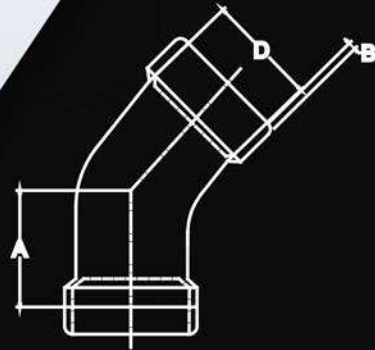


TUERCA UNION

Nom.	Depth						
Pipe	B	of	L	W	Weigth	AISI	AISI
Size	mm.	socket	mm.	mm.	kg/pce	304L	316L
1/4"	14.10	9.53	37.00	32.00	0.20	•	•
3/8"	17.53	9.53	37.00	36.00	0.35	•	•
1/2"	21.72	9.53	38.00	41.00	0.40	•	•
3/4"	27.05	12.70	46.00	50.00	0.45	•	•
1"	33.78	12.70	52.00	60.00	1.00	•	•
1 1/4"	42.55	12.70	54.00	70.00	1.30	•	•
1 1/2"	48.64	12.70	56.00	78.00	1.70	•	•
2"	61.11	15.88	68.00	95.00	3.00	•	•

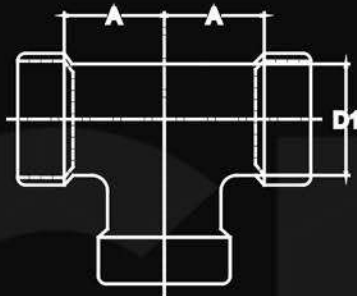


CONEXIONES ROSCADAS 3000 LIBRAS



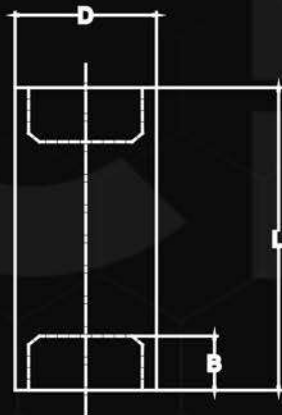
CODO 45°

Nom.				
Pipe	A	D	G	Weigth
Size	mm.	mm.	mm.	kg/pce
1/2"	25.40	38.10	4.09	0.32
3/4"	28.40	46.00	4.27	0.51
1"	33.30	55.60	4.98	0.85
1 1/2"	42.90	75.40	5.54	1.85
2"	43.70	84.10	6.05	3.00



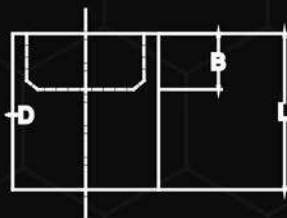
TEE RECTA

Nom.				
Pipe	A	D	B	Weigth
Size	mm.	mm.	mm.	kg/pce
1/2"	33.30	38.10	10.92	0.52
3/4"	38.10	46.00	12.27	0.83
1"	44.50	55.60	14.73	1.38
1 1/2"	60.30	75.40	17.78	3.12
2"	63.50	84.10	19.05	4.00



COPE

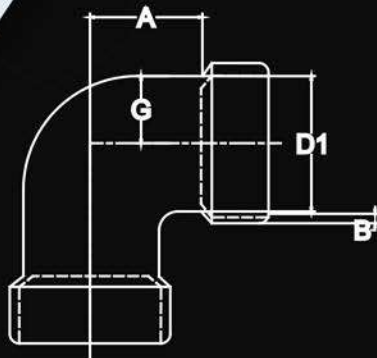
Nom.				
Pipe	L	D	B	Weigth
Size	mm.	mm.	mm.	kg/pce
1/2"	47.60	28.60	10.92	0.14
3/4"	50.80	34.90	12.70	0.20
1"	60.30	44.50	14.73	0.40
1 1/2"	79.40	63.50	17.78	1.00
2"	85.70	76.20	19.05	1.90



MEDIO COPE

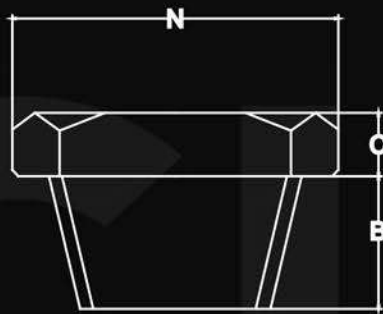
Nom.				
Pipe	L	D	B	Weigth
Size	mm.	mm.	mm.	kg/pce
1/2"	23.80	28.60	10.92	0.07
3/4"	25.40	34.90	12.70	0.10
1"	30.20	44.50	14.73	0.20
1 1/2"	39.70	36.50	17.78	0.50
2"	42.90	76.20	19.05	0.95

CONEXIONES ROSCADAS 3000 LIBRAS



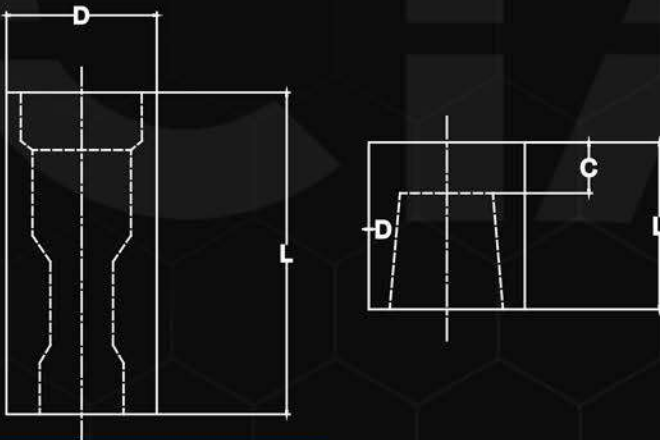
CODO 90°

Nom.				
Pipe	A	D	G	Weigth
Size	mm.	mm.	mm.	kg/pce
1/2"	28.60	38.10	4.09	0.40
3/4"	33.30	46.00	4.27	0.63
1"	38.10	55.60	4.98	1.10
1 1/2"	50.80	75.40	5.54	2.35
2"	60.30	84.10	6.05	3.30



TAPON MACHO

Nom.				
Pipe	B	N	C	Weigth
Size	mm.	mm.	mm.	kg/pce
1/2"	20.00	22.00	8.00	0.08
3/4"	21.00	27.00	10.00	0.15
1"	25.00	35.00	10.00	0.25
1 1/2"	26.00	51.00	16.00	0.65
2"	27.00	64.00	18.00	1.10

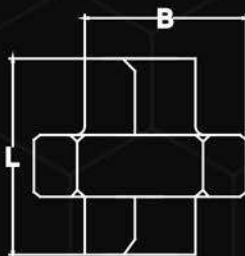


TAPON CAPA

Nom.				
Pipe	L	D	G	Weigth
Size	mm.	mm.	mm.	kg/pce
1/2"	31.80	28.60	6.36	0.12
3/4"	36.50	34.90	6.35	0.19
1"	41.30	44.50	9.53	0.35
1 1/2"	44.50	63.50	11.11	0.75
2"	47.60	76.20	12.70	1.45

COPLÉ REDUCIDO

Nom.			
Pipe	L	D	Weigth
Size	mm.	mm.	kg/pce
1 x 1/2"	60.30	44.50	0.12
1 x 3/4"	60.30	44.50	0.19
1 1/4 x 1"	66.70	57.20	0.35
1 1/2 x 1"	79.40	63.50	0.75
2 x 1 1/2"	85.70	76.20	1.45



TUERCA UNION

Nom.			
Pipe	L	D	Weigth
Size	mm.	mm.	kg/pce
1/2"	50.00	43	0.40
3/4"	57.90	50	0.50
1"	63.50	60	1.00
1 1/2"	77.80	78	1.60
2"	87.30	95	2.50

TUERCA UNION NPT

(ESPECIF/TAM)	DIMENSIONES							
	1/4"	3/8"	1/2"	3/4"	1"	1 1/4"	1 1/2"	2"
A ± 1.5 mm..	36.3	37.2	39.1	45.4	49.0	51.1	54.2	58.8
A ± 0.5 mm..	10.5	11.0	11.6	14.9	15.5	14.5	15.0	16.4
H ± 0.5 mm..	15.0	15.0	15.0	15.5	18.0	21.3	22.2	25.2
S1 ± 1.0 mm..	16.8	20.2	24.5	29.7	36.5	46.2	52.3	64.6
S2 ± 1.0 mm..	27.6	34.0	39.5	46.7	54.0	63.9	73.5	86.9



TAPON CAPA

(ESPECIF/TAM)	DIMENSIONES							
	1/4"	3/8"	1/2"	3/4"	1"	1 1/4"	1 1/2"	2"
d1 mm..	1/4"	3/8"	1/2"	3/4"	1"	1 1/4"	1 1/2"	2"
d2 mm..	18.3	21.7	26.6	32.1	39.5	49.2	55.5	68.2
A mm..	18.5	19.5	21.1	21.7	24.8	26.5	30.0	34.2
C mm..	9.4	9.7	10.0	11.0	15.0	17.5	18.0	18.0



TAPON CAPA

(ESPECIF/TAM)	DIMENSIONES									
	1/4"	3/8"	1/2"	3/4"	1"	1 1/4"	1 1/2"	2"	3"	4"
d1 mm..	1/4"	3/8"	1/2"	3/4"	1"	1 1/4"	1 1/2"	2"	3"	4"
d3 mm..	18.5	21.5	26.5	32.0	39.5	48.5	54.5	66.5	100.00	129.00
L2 mm..	27.0	28.0	36.0	39.0	43.0	48.0	48.0	56.0	71.00	83.00



REDUCCION BUSHING

(ESPECIF/TAM)	DIMENSIONES										
	1 1/4 x 3/4"	1 1/4 x 1"	1 1/2 x 1/2"	1 1/2 x 3/4"	1 1/2 x 1"	1 1/2 x 1 1/4"	2 x 1/2"	2 x 3/4"	2 x 1"	2 x 1 1/4"	2 x 1 1/2"
A mm..	46.0	46.0	51.8	51.8	51.8	51.8	62.5	62.5	62.5	62.5	62.5
L mm..	20.5	17.5	23.5	22.5	19.5	18.5	23.8	23.0	20.0	18.5	18.0
h mm..	31.5	31.5	33.5	33.5	33.5	33.5	34.0	34.0	34.0	34.0	34.0



CONEXIONES FUNDIDAS 150 LIBRAS

CODO 90° NPT

(ESPECIF/TAM)	DIMENSIONES									
	1/4"	3/8"	1/2"	3/4"	1"	1 1/4"	1 1/2"	2"	3"	4"
d1 mm..	1/4"	3/8"	1/2"	3/4"	1"	1 1/4"	1 1/2"	2"	3"	4"
d2 mm..	18.3	21.7	26.6	32.1	39.5	49.2	54.3	68.2	99.0	125.0
C mm..	9.4	9.7	12.0	12.0	14.0	16.0	18.0	18.0	24.0	24.0
h mm..	6.0	6.5	7.5	8.5	10.0	11.0	12.0	13.0	15.0	15.0

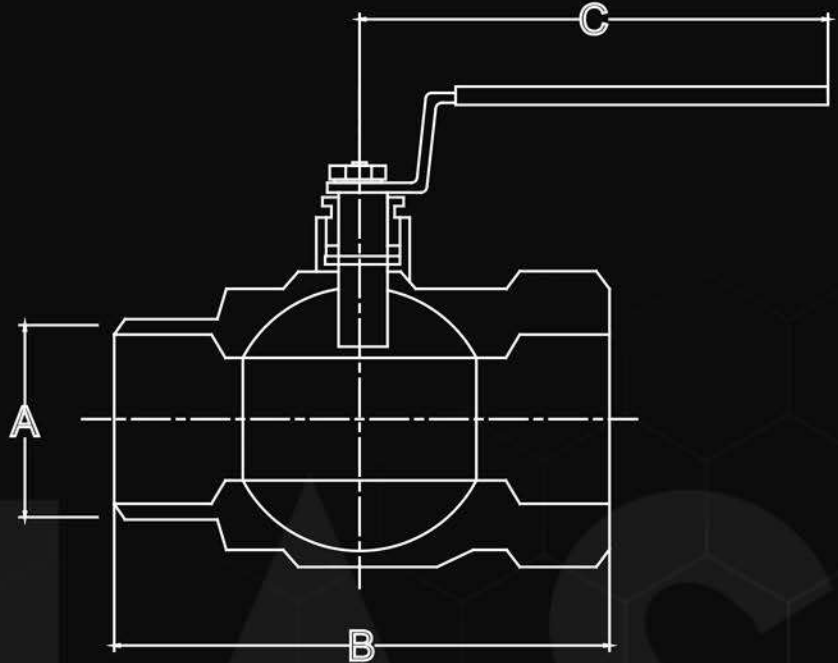


TEE RECTA NPT

(ESPECIF/TAM)	DIMENSIONES									
	1/4"	3/8"	1/2"	3/4"	1"	1 1/4"	1 1/2"	2"	3"	4"
d1 mm..	1/4"	3/8"	1/2"	3/4"	1"	1 1/4"	1 1/2"	2"	3"	4"
d2 mm..	18.3	21.7	26.6	32.1	41.0	49.2	55.5	68.2	99.0	125.0
C mm..	9.4	9.7	12.0	12.0	14.0	16.0	18.0	18.0	24.0	25.0
D mm..	38.0	46.0	54.0	64.0	76.0	90.0	96.0	114.0	156.0	192.0



VALVULA ESFERA



DIMENSIONES

TAMAÑO		D	L	H	W	PESO
DN	NPS					kg
15	1/2"	10.0	44.7	39.5	84.0	0.131
20	3/4"	14.5	49.2	42.0	84.0	0.168
25	1"	18.0	55.1	52.8	98.5	0.270
32	1 1/4"	23.0	67.0	58.0	125.0	0.476
40	1 1/2"	31.0	77.3	69.5	134.0	0.744
50	2"	38.0	96.4	78.8	156.6	1.220
60	3"	65.0	131.0	120.6	243.5	3.960



MISIÓN

APORTAR A NUESTROS CLIENTES PRODUCTOS DE ALTA CALIDAD AYUDANDO Y APORTANDO SOLUCIONES A SU NEGOCIO, NUESTRA ATENCIÓN, SERVICIO Y ENTREGA OPORTUNA NOS POSICIONA POR ENCIMA DE NUESTRA COMPETENCIA HACIENDO QUE LA COMPRA DE NUESTROS PRODUCTOS SEA ENTREGADA JUSTO EN EL LUGAR EN EL QUE NUESTROS CLIENTES LO NECESITAN.

VISIÓN

CONSOLIDARNOS COMO UNA EMPRESA DE TALLA NACIONAL QUE SE DISTINGA POR LA CALIDAD EN SUS PRODUCTOS Y MEJORA CONTINUA, TRABAJANDO DE LA MANO CON NUESTROS CLIENTES EN SATISFACER SUS NECESIDADES Y REQUERIMIENTOS PARA DE ESTA FORMA ASEGURAR RELACIONES COMERCIALES DE EXCELENCIA.

SERVICIO

EN CIAS, ENTENDEMOS LA NECESIDAD DE ENTREGAS OPORTUNAS, RÁPIDAS, EFICIENTES Y EFICACES, POR ELLO, HEMOS HECHO DE NUESTRO SERVICIO LA PRINCIPAL VENTAJA COMPETITIVA CON LA CUAL AYUDAMOS A NUESTROS CLIENTES A REDUCIR TIEMPOS DE ENTREGA HACIENDO LLEGAR NUESTROS PRODUCTOS LO MÁS RÁPIDO POSIBLE.

CIAS

COMERCIALIZADORA DE INOXIDABLE



Teléfono principal: (55) 4810-8933

Oficina 1: (55) 5894-9965

Oficina 2: (55) 6379-9857

Oficina 3: (55) 6379-9858

Cda. Hermenegil Do Galeana N° 26
Colonia Buenavista Tultitlan Estado De México

www.cias.com.mx