

DLINE[®]

PRODUCTS



**QUICK
REFERENCE
GUIDE**

VALVES

BALL VALVES

CARBON STEEL NPT & SW



1010CR Series

1000 PSI / REDUCED PORT
1 PC - WCB BODY
S.S. BALL
NACE MR0175
SIZES: 1/2"- 4"



1020CF Series

1000 PSI / FULL PORT
2 PC - WCB BODY
S.S. BALL
NACE MR0175
SIZES: 1/2"- 4"



1030CF Series

1000 PSI / FULL PORT
3 PC - WCB BODY
S.S. BALL
NACE MR0175
SIZES: 1/2"- 4"



2010CR Series

2000 PSI / REDUCED PORT
1 PC HEX - A-105 BODY
S.S. BALL
NACE MR0175
SIZES: 1/4"- 2"



2020CF Series

2000 PSI / FULL PORT
2 PC - WCB BODY
S.S. BALL
NACE MR0175
SIZES: 1/4"- 2"



3020CF Series

3000 PSI / FULL PORT
2 PC - WCB BODY
S.S. BALL
NACE MR0175
SIZES: 1/4"- 2"

STAINLESS STEEL NPT & SW



1010SR Series

1000 PSI / REDUCED PORT
1 PC - CF8M BODY
S.S. BALL
NACE MR0175
SIZES: 1/4"- 2"



1020SF Series

1000 PSI / FULL PORT
2 PC - CF8M BODY
S.S. BALL
NACE MR0175
SIZES: 1/2"- 4"



1030SF Series

1000 PSI / FULL PORT
3 PC - CF8M BODY
S.S. BALL
NACE MR0175
SIZES: 1/2"- 4"



2020SF Series

2000 PSI / FULL PORT
2 PC - CF8M BODY
S.S. BALL
NACE MR0175
SIZES: 1/4"- 2"



3020SF Series

3000 PSI / FULL PORT
2 PC - CF8M BODY
S.S. BALL
NACE MR0175
SIZES: 1/4"- 2"

FLANGED END



5112FF Series

5312FF Series

5612FF Series

FLOATING TYPE
CLASS 150, 300 & 600
2 PC - WCB BODY
S.S. BALL
FULL PORT / NACE MR0175
API 6D / API 6FA / API 607
SIZES: 2"- 10"



5612TF Series

TRUNNION TYPE
CLASS 150, 300, & 600
2 PC - WCB BODY
S.S. BALL
FULL PORT / NACE MR0175
API 6D / API 6FA / API 607
SIZES: 2" - 10"

*OTHER INTERNALS, SIZES & ENDS AVAILABLE UPON REQUEST

BUTTERFLY VALVES



4111W Series

WAFER TYPE / BUNA SEAT
CLASS 125 / 150
PLATED DUCTIL IRON DISC
DUCTILE IRON BODY
SIZES: 2" - 12"



4112W Series

WAFER TYPE / BUNA SEAT
CLASS 125 / 150
CF8M DISC
DUCTILE IRON BODY
SIZES: 2" - 12"



4111L Series

LUG TYPE / BUNA SEAT
CLASS 125 / 150
PLATED DUCTIL IRON DISC
DUCTILE IRON BODY
SIZES: 2" - 12"



4112L Series

LUG TYPE / BUNA SEAT
CLASS 125 / 150
CF8M DISC
DUCTILE IRON BODY
SIZES: 2" - 12"

**OTHER INTERNALS, SIZES & ENDS AVAILABLE UPON REQUEST*

OIL FIELD VALVES



BDT Series

BALL VALVE
1000/2000 PSI
2 PC - DUCTILE IRON BODY
S.S. BALL
NACE MR0175
SIZES: 1" FULL PORT
2" - 4" STANDARD PORT



BCT Series

BALL VALVE
3000/5000 PSI
2 PC - CARBON STEEL BODY
S.S. BALL
NACE MR0175
SIZES: 2" STANDARD PORT



CDT Series

CHECK VALVE
2000 WOG / VITON SEAT
DUCTILE IRON BODY
CF8M DISC
NACE MR0175
SIZES: 1" - 4"



CCT Series

CHECK VALVE
3600 - 5000 WOG / VITON SEAT
CARBON STEEL BODY
CF8M DISC
NACE MR0175
SIZES: 1" - 4"

CAST STEEL VALVES



1118F Series

1318F Series

1618F Series

GATE VALVE
CLASS 150, 300 & 600
CAST STEEL A 216 GR WCB
TRIM 8 / RF ENDS
API 600
SIZES: 2" - 24"



2118F Series

2318F Series

2618F Series

CHECK VALVE
CLASS 150, 300 & 600
CAST STEEL A 216 GR WCB
TRIM 8 / RF ENDS
BS 1868
SIZES: 2" - 24"



3118F Series

3318F Series

3618F Series

GLOBE VALVE
CLASS 150, 300 & 600
CAST STEEL A 216 GR WCB
TRIM 8 / RF ENDS
API 623 (BS 1873)
SIZES: 2" - 24"

**OTHER INTERNALS, SIZES & ENDS AVAILABLE UPON REQUEST*

FORGED STEEL VALVES



1828T Series

GATE VALVE
CLASS 800
FORGED STEEL A-105N
TRIM 8 / NPT ENDS
API 602 / NACE MR0175
SIZES: 1/2"-2 1/2" *



2828T Series

CHECK VALVE
CLASS 800
FORGED STEEL A-105N
TRIM 8 / NPT ENDS
API 602 / NACE MR0175
SIZES: 1/2"-2" *



3828T Series

GLOBE VALVE
CLASS 800
FORGED STEEL A-105N
TRIM 8 / NPT ENDS
API 602 / NACE MR0175
SIZES: 1/2"-2" *

*OTHER INTERNALS, SIZES & ENDS AVAILABLE UPON REQUEST

FLANGES

BLIND



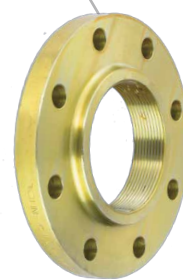
SLIP ON



SOCKET WELD



THREADED



WELDING NECK



CLASS 150, 300 & 600
SA/A-105N BODY
RF, RTJ / YELLOW COATED
ANSI B16.5
SIZES: 1/2" - 54"

ACCESSORIES



CG Type

SPIRAL WOUND GASKET
CLASS 150, 300 & 600
OUTER RING: CARBON STEEL
FILLER: GRAPHITE
HOOP: SS304 & SS316
ASTM B16.20
SIZES: 1/2" - 36"



CGI Type

SPIRAL WOUND GASKET
CLASS 150, 300 & 600
OUTER RING: CARBON STEEL
INNER RING: SS304 & SS316
FILLER: GRAPHITE
HOOP: SS304 & SS316
ASTM B16.20
SIZES: 1/2" - 36"



B7P Series

B7-STUDS
NUTS: ASTM A-194 Gr. 2H
STUD: ASTM A-193 Gr. B7
YELLOW ZINC PLATED
DIAMETER: 1/2" - 1 7/8"
LENGTH: 2 1/2" - 15 1/2"

INSTRUMENTATION

NEEDLE VALVES

CARBON STEEL



NC Series

DELRIN SEAT (6000 PSI)
METAL SEAT (10000 PSI)
FxF / MxF - NPT ENDS
NACE MR0175
SIZES: 1/4" - 1"



NBC Series

BLEED TYPE
DELRIN SEAT (6000 PSI)
FxF / MxF - NPT ENDS
NACE MR0175
SIZES: 1/4" - 1"



NAC Series

ANGLE TYPE
METAL SEAT (10000 PSI)
MxF - NPT ENDS
NACE MR0175
SIZES: 1/4" - 1/2"



NMC Series

MIN TYPE
DELRIN SEAT (6000 PSI)
MxF - NPT ENDS
NACE MR0175
SIZES: 1/4"



NPC Series

MULTI-PORT TYPE
METAL SEAT (10000 PSI)
MxF - NPT ENDS
NACE MR0175
SIZES: 1/2"

316 STAINLESS STEEL



NS Series

DELRIN SEAT (6000 PSI)
METAL SEAT (10000 PSI)
FxF / MxF - NPT & OD ENDS
NACE MR0175
SIZES: 1/4" - 1"



NBS Series

BLEED TYPE
DELRIN SEAT (6000 PSI)
MxF - NPT ENDS
NACE MR-0175
SIZES: 1/4" - 1"



NAS Series

ANGLE TYPE
METAL SEAT (10000 PSI)
MxF - NPT ENDS
NACE MR0175
SIZES: 1/4" - 3/4"



NMS Series

MIN TYPE
DELRIN SEAT (6000 PSI)
MxF - NPT ENDS
NACE MR0175
SIZES: 1/4"



NPS Series

MULTI-PORT TYPE
DELRIN SEAT (6000 PSI)
METAL SEAT (10000 PSI)
MxF - NPT ENDS
NACE MR0175
SIZES: 1/2"

MANIFOLD VALVES

316 STAINLESS STEEL



2S Series

2-VALVE
METAL SEAT (6000 PSI)
MxF - NPT ENDS
VENT: 1/4"
NACE MR0175
SIZES: 1/2"

CHOKES

CARBON STEEL



FC-140

CARBON STEEL BODY
W/CARBIDE TUNGSTENG
SIZES: 06/64-48/64



CAMERON

CARBON STEEL BODY
W/CARBIDE TUNGSTENG
SIZES: 06/64-48/64



THC 1003 P

CARBON STEEL BODY
W/CARBIDE TUNGSTENG
SIZES: 06/64-48/64



GRAY 60

CARBON STEEL BODY
W/CARBIDE TUNGSTENG
SIZES: 06/64-48/64



GRAY 80

CARBON STEEL BODY
W/CARBIDE TUNGSTENG
SIZES: 06/64-48/64

STAINLESS STEEL



FC-140

STAINLESS STEEL BODY
DRILLED
SIZES: 50/64-64/64



CAMERON

STAINLESS STEEL BODY
DRILLED
SIZES: 50/64-64/64



THC 1003 P

STAINLESS STEEL BODY
DRILLED
SIZES: 50/64-64/64



GRAY 60

STAINLESS STEEL BODY
DRILLED
SIZES: 50/64-64/64



GRAY 80

STAINLESS STEEL BODY
DRILLED
SIZES: 50/64-64/64

REDUCING VALVES



ADJUSTABLE

POSITIVE

JN-60 CHOKE
CARBON STEEL BODY
NPT ENDS
PORT: 3/4" & 1"
SIZES: 2"

ACCESSORIES



NIPPLE

CARBON STEEL BODY
NPT ENDS
PERFORATION SIZES: 06/64-48/64
SIZE: 2"

COMING SOON

TUBE FITTINGS



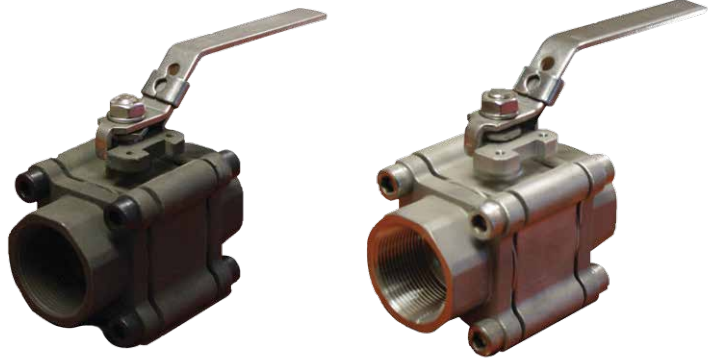
RING JOINT GASKETS



BRASS BALL VALVE



1530 SERIES



CAST IRON VALVES



OUR MISSION:

To constantly innovate our work processes through optimal design, certified manufacture and reliable logistics, in order to guarantee our clients the best quality and the most efficient cost-performance of their investment.



 +52(81)1646-9090
 sales@dlineproducts.com

www.dlineproducts.com