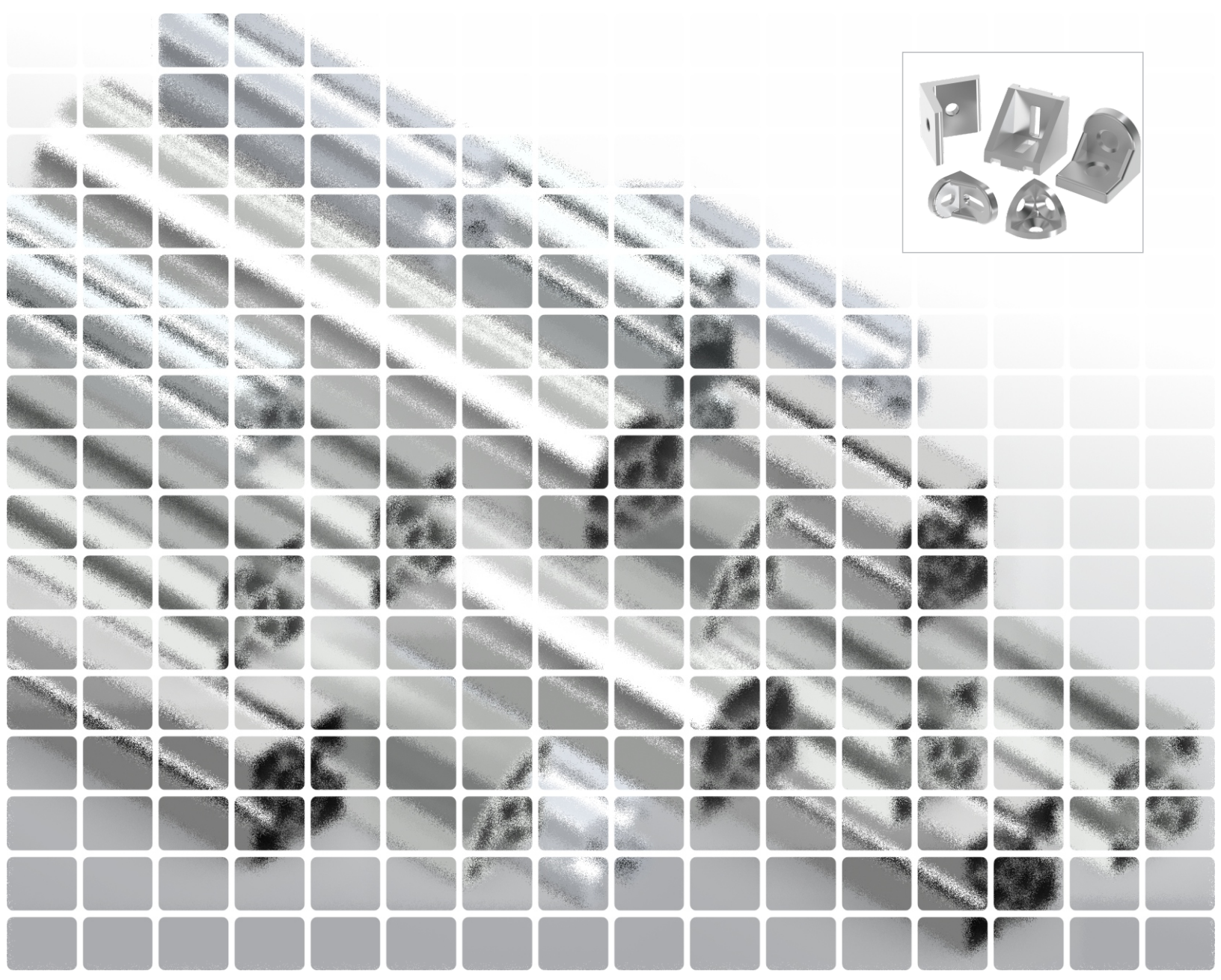
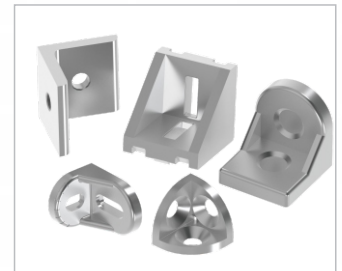
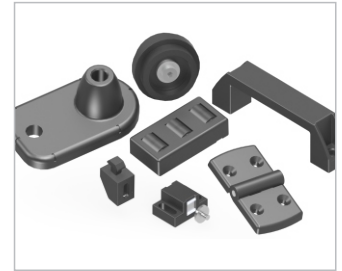
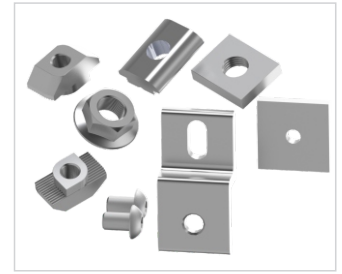
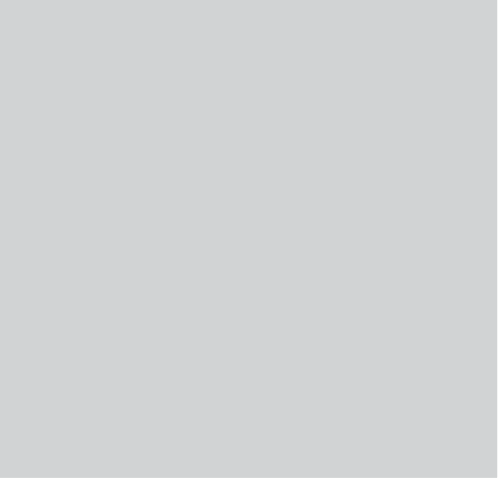
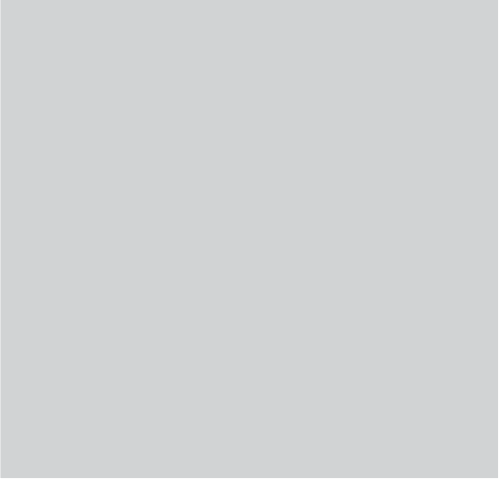
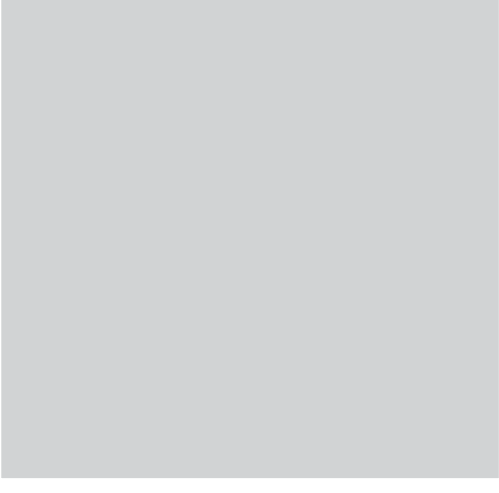
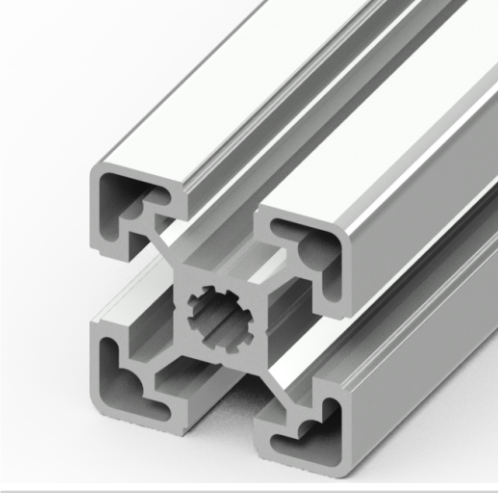
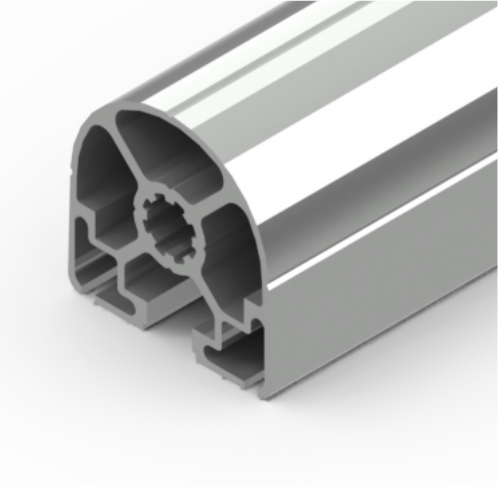
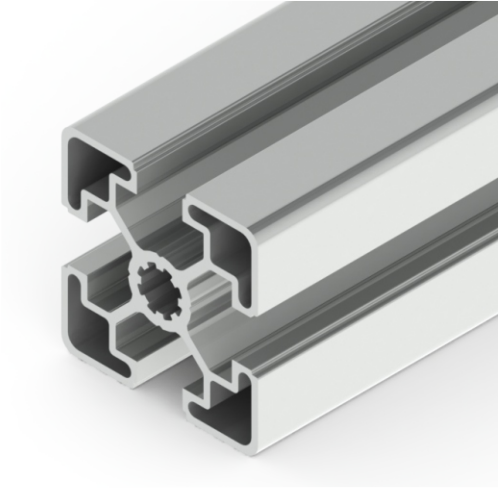


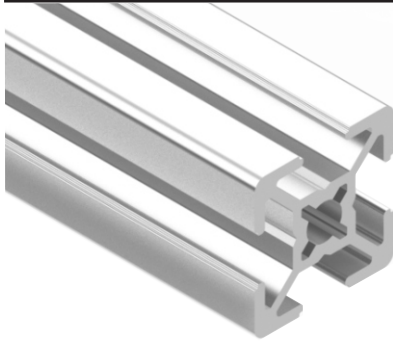


# ALDER

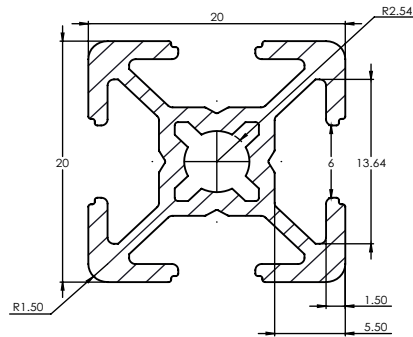
ALUMINIOS Y DERIVADOS





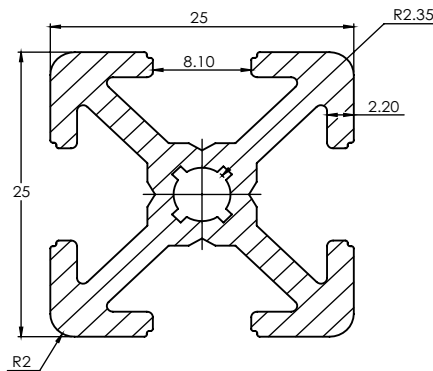
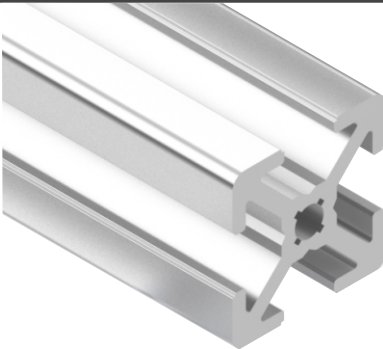


Now also available in 6.1m  
Ahora disponible en 6.1m



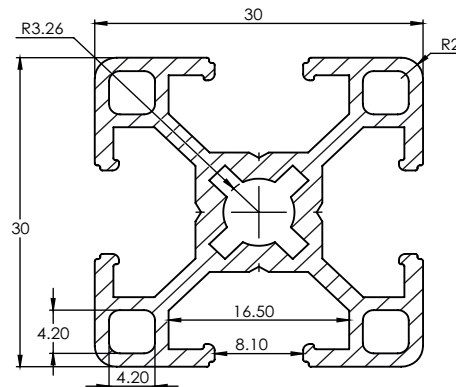
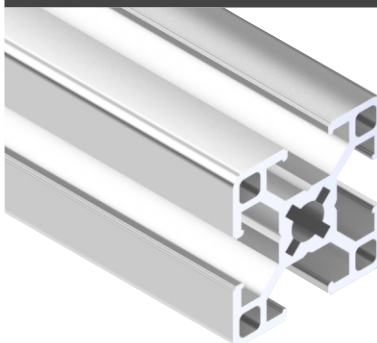
### PROFILE 20x20

PART NUMBER	777-2020
MATERIAL	6105-T5 Aluminum
SURFACE FINISH	Clear anodized
WEIGHT	0.44 Kg/m
STOCK LENGTH	3.00m
PERIMETER	18.15 cm
AREA	1.64 cm <sup>2</sup>
CIRCLE	27.04 mm
MOMENT OF INERTIA	X:1.1 kg/cm <sup>2</sup>
	Y:9966.37 kg/cm <sup>2</sup>
	Z:9966.37 kg/cm <sup>2</sup>
MASS	1.33 kg



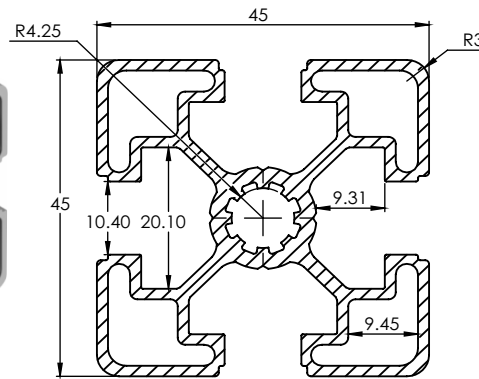
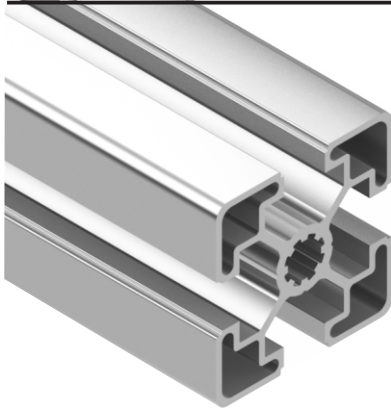
### PROFILE 25x25

PART NUMBER	777-2525
MATERIAL	6105-T5 Aluminum
SURFACE FINISH	Clear anodized
WEIGHT	.713 kg/m
STOCK LENGTH	6.10 m
PERIMETER	21.33 cm
AREA	2.56 cm <sup>2</sup>
CIRCLE	33.69 mm
MOMENT OF INERTIA	X:5541.57 kg/cm <sup>2</sup>
	Y:13502210.16 kg/cm <sup>2</sup>
	Z:13502210.16 kg/cm <sup>2</sup>
MASS	4.35 kg



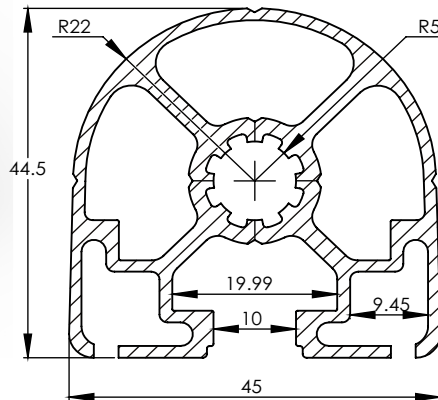
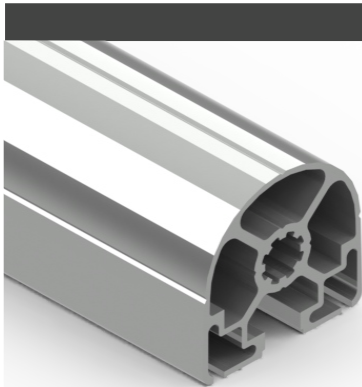
### PROFILE 30x30

PART NUMBER	777-3030
MATERIAL	6105-T5 Aluminum
SURFACE FINISH	Clear anodized
WEIGHT	0.88 kgs/m
STOCK LENGTH	6.10 m
PERIMETER	33.02 cm
AREA	3.12 cm <sup>2</sup>
CIRCLE	40.77 mm
MOMENT OF INERTIA	X:9.07 kg/cm <sup>2</sup>
	Y:159641.35 kg/cm <sup>2</sup>
	Z:159641.35 kg/cm <sup>2</sup>
MASS	5.15 kg



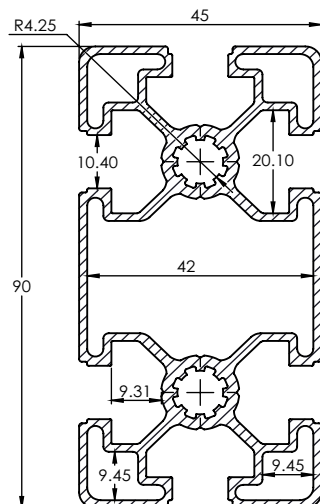
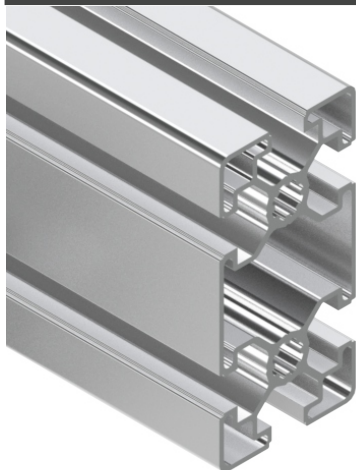
**PROFILE 45x45**

PART NUMBER	777-4545
MATERIAL	6105-T5 Aluminum
SURFACE FINISH	Clear anodized
WEIGHT	1.54 kgs/m
STOCK LENGTH	6.10 m
PERIMETER	59.93 cm
AREA	5.71 cm <sup>2</sup>
CIRCLE	61.154 mm
MOMENT OF INERTIA	X:36.17 kg/cm <sup>2</sup>
	Y:291841.69 kg/cm <sup>2</sup>
	Z:291841.74 kg/cm <sup>2</sup>
MASS	9.411 kg



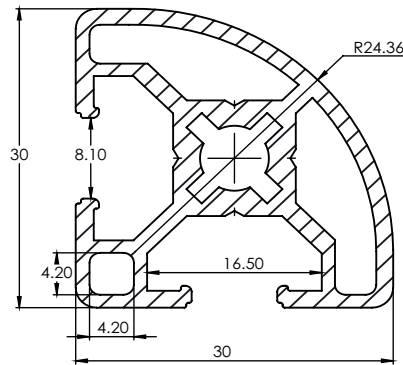
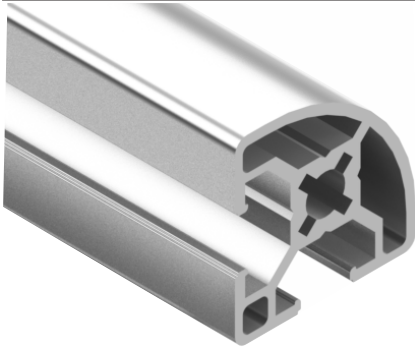
**PROFILE 45 FINISHED EDGES**

PART NUMBER	777-45180
MATERIAL	6105-T5 Aluminum
SURFACE FINISH	Clear anodized
WEIGHT	1.38 kgs/m
STOCK LENGTH	6.10 m
PERIMETER	52.684 cm
AREA	5.1 cm <sup>2</sup>
CIRCLE	
MOMENT OF INERTIA	X:40361.29 kg/cm <sup>2</sup>
	Y:40361.52 kg/cm <sup>2</sup>
	Z:4.33 kg/cm <sup>2</sup>
MASS	8.4 kg



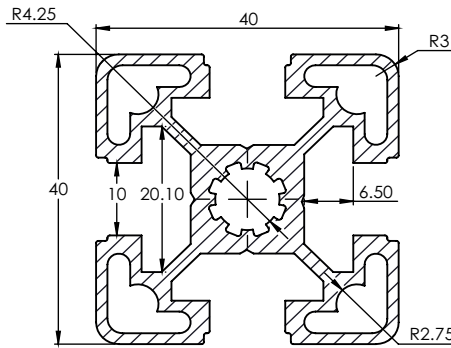
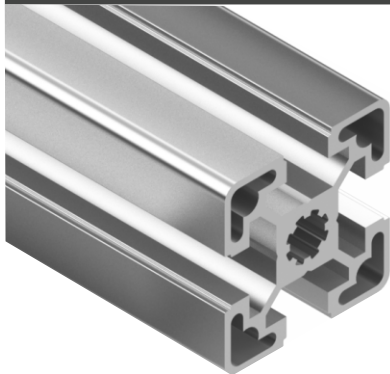
**PROFILE 45x90**

PART NUMBER	777-4590
MATERIAL	6105-T5 Aluminum
SURFACE FINISH	Clear anodized
WEIGHT	2.35 kgs/m
STOCK LENGTH	6.10 m
PERIMETER	98.87 cm
AREA	9.49 cm <sup>2</sup>
CIRCLE	98.612 mm
MOMENT OF INERTIA	X:62.18 kg/cm <sup>2</sup>
	Y:484968.4 kg/cm <sup>2</sup>
	Z:484969.83 kg/cm <sup>2</sup>
MASS	14.37 kg



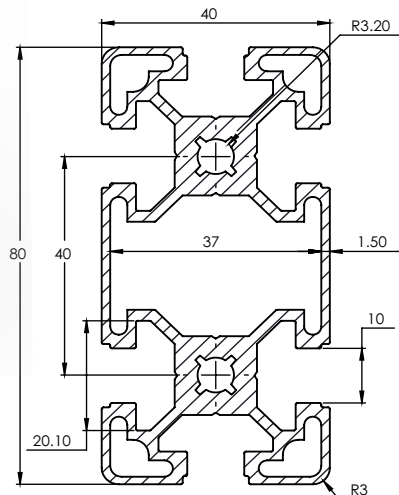
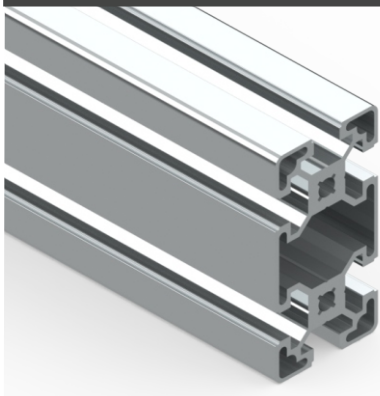
**PROFILE 30x30R**

PART NUMBER	777-30R
MATERIAL	6105-T5 Aluminum
SURFACE FINISH	Clear anodized
WEIGHT	0.88 kgs/m
STOCK LENGTH	6.10 m
PERIMETER	31.51 cm
AREA	3.26 cm <sup>2</sup>
CIRCLE	40.77 mm
MOMENT OF INERTIA	X:8.48 kg/cm <sup>2</sup> Y:466671.41 kg/cm <sup>2</sup> Z:466671.41 kg/cm <sup>2</sup>
MASS	5.37 kg



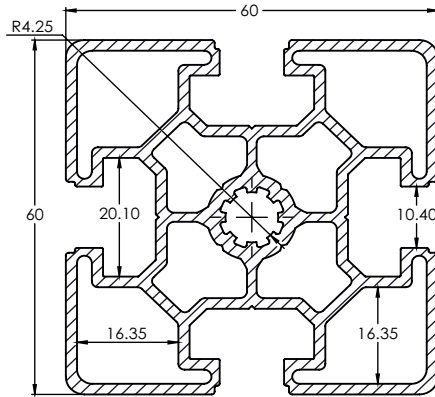
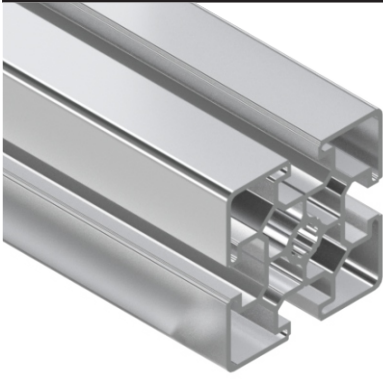
**PROFILE 40x40**

PART NUMBER	777-4040
MATERIAL	6105-T5 Aluminum
SURFACE FINISH	Clear anodized
WEIGHT	1.50 kgs/m
STOCK LENGTH	6.10 m
PERIMETER	20.56 cm
AREA	5.5 cm <sup>2</sup>
CIRCLE	54.083 mm
MOMENT OF INERTIA	X:280903.604 kg/cm <sup>2</sup> Y:280903.604 kg/cm <sup>2</sup> Z:29.191 kg/cm <sup>2</sup>
MASS	9.128 kg



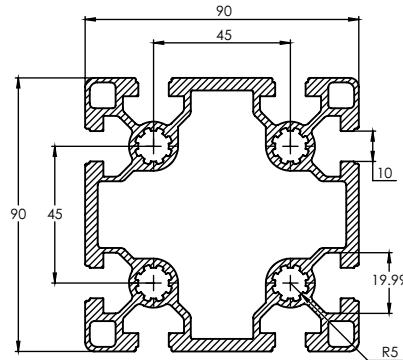
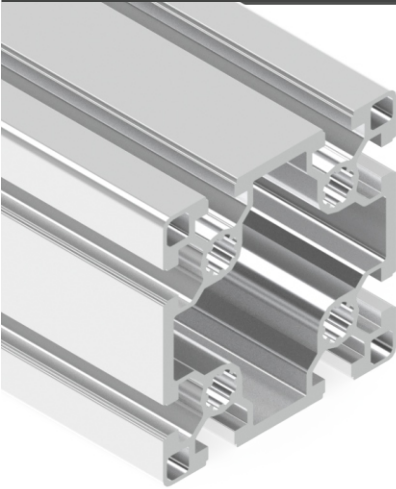
**PROFILE 40x80**

PART NUMBER	777-4080
MATERIAL	6105-T5 Aluminum
SURFACE FINISH	Clear anodized
WEIGHT	2.57 kg/m
STOCK LENGTH	6.10 m
PERIMETER	83.54 cm
AREA	9.57 cm <sup>2</sup>
CIRCLE	100.37 mm
MOMENT OF INERTIA	X:1987.17 kg/cm <sup>2</sup> Y:215004.4 kg/cm <sup>2</sup> Z:216245.2 kg/cm <sup>2</sup>
MASS	4.35 kg



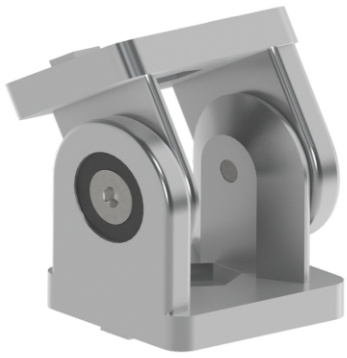
**PROFILE 60x60**

PART NUMBER	777-6060
MATERIAL	6105-T5 Aluminum
SURFACE FINISH	Clear anodized
WEIGHT	2.60 kgs/m
STOCK LENGTH	6.10 m
PERIMETER	96.31 cm
AREA	9.62 cm <sup>2</sup>
CIRCLE	82.369 mm
MOMENT OF INERTIA	X:106.71 kg/cm <sup>2</sup> Y:491448.65 kg/cm <sup>2</sup> Z:491448.65 kg/cm <sup>2</sup>
MASS	15.85 kg

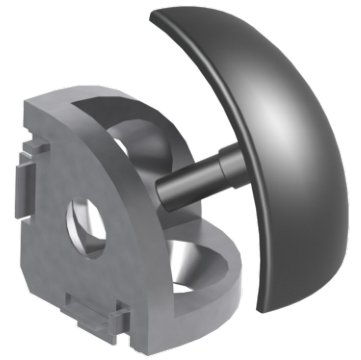


**PROFILE 90x90**

PART NUMBER	777-9090
MATERIAL	6105-T5 Aluminum
SURFACE FINISH	Clear anodized
WEIGHT	3.89 kgs/m
STOCK LENGTH	6.10 m
PERIMETER	148.211 cm
AREA	14.41 cm <sup>2</sup>
CIRCLE	123.137 mm
MOMENT OF INERTIA	X:439.3 kg/cm <sup>2</sup> Y:736090.04 kg/cm <sup>2</sup> Z:736090.68 kg/cm <sup>2</sup>
MASS	23.73 kg

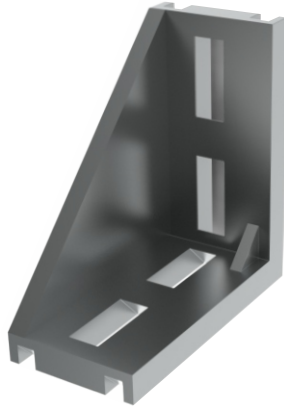


ACCESSORIES

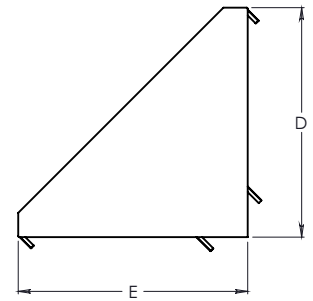
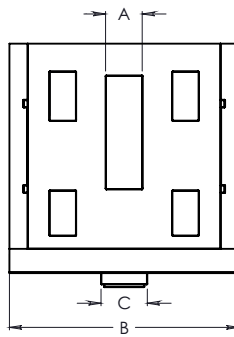
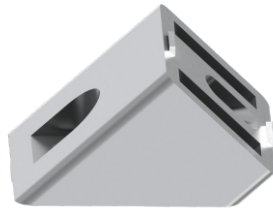


**GUSSET:**

**MATERIAL: DIE CAST ALUMINUM**



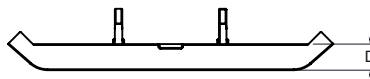
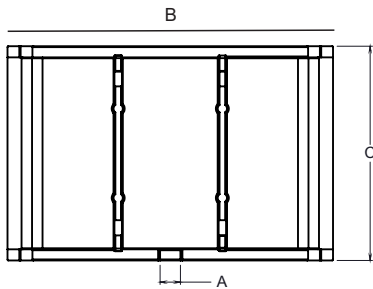
GUSSET	PART NUMBER	A	B	C	D	E
GUSSET 20X20 mm	ALG2020	4.5	18.0	SLOT06	18.0	18.0
GUSSET 30X30 mm	ALG3030	6.4	28.0	SLOT08	27.0	27.0
GUSSET 40X40 mm	ALG4040	9.0	40.0	SLOT10	39.0	39.0
GUSSET 40X80 mm	ALG4080	9.0	38.0	SLOT10	76.0	76.0
GUSSET 45X45 mm	ALG4545	10.0	42.0	SLOT10	42.0	42.0
GUSSET 60X60 mm	ALG6060	10.0	58.0	SLOT10	57.0	57.0
GUSSET 45X90 mm	ALG4590	10.0	43.0	SLOT10	86.0	86.0
GUSSET 90X90 mm	ALG9090	10.0	88.0	SLOT10	86.0	86.0
GUSSET 40,45°	ALG4045	9.0	40.0	SLOT 08	40	52.0



**END CAP FOR GUSSET:**

**MATERIAL: PLASTIC**

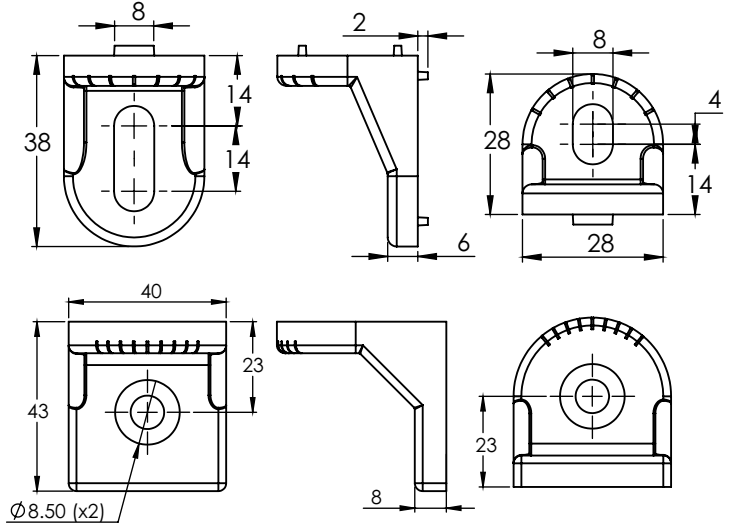
GUSSET	PART NUMBER	A	B	C	D
END CAP FOR GUSSET 20X20 mm	ALECG2020	5.0	28.2	17.6	5.0
END CAP FOR GUSSET 30X30 mm	ALECG3030	6.0	44.5	27.5	4.0
END CAP FOR GUSSET 40X40 mm	ALECG4040	6.0	64.0	39.5	4.0
END CAP FOR GUSSET 40X80 mm	ALECG4080	6.0	106.0	38.0	4.0
END CAP FOR GUSSET 45X45 mm	ALECG4545	6.0	70.0	40.0	8.5
END CAP FOR GUSSET 60X60 mm	ALECG6060	6.0	87.5	57.6	7.0
END CAP FOR GUSSET 90X90 mm	ALECG9090	6.0	133.0	87.6	7.0



### TURNING ANGLE

MATERIAL: DIE CAST ALUMINUM

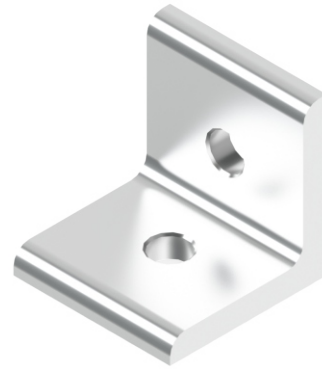
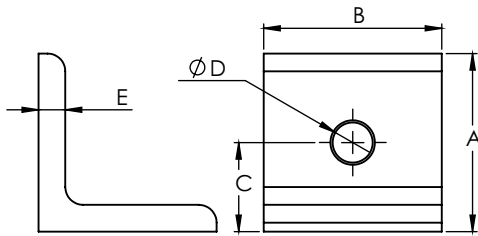
TURNING ANGLE	PART NUMBER
TURNING ANGLE 30	ALTA30
TURNING ANGLE 45	ALTA45



### CONNECTION ANGLE

MATERIAL: ANODIZED ALUMINUM

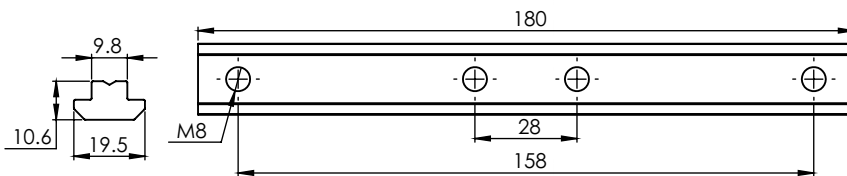
CONNECTION ANGLE	A	B	C	D	E	PART NUMBER
CONNECTION ANGLE 20mm	20.0	18.0	10.0	5.5	3.0	ALCA20
CONNECTION ANGLE 30mm	30.0	30.0	15.0	7.0	5.0	ALCA30
CONNECTION ANGLE 45mm	45.0	41.0	22.0	9.0	6.0	ALCA45



### CONNECTING STRIP

MATERIAL: ZINC PLATED STEEL

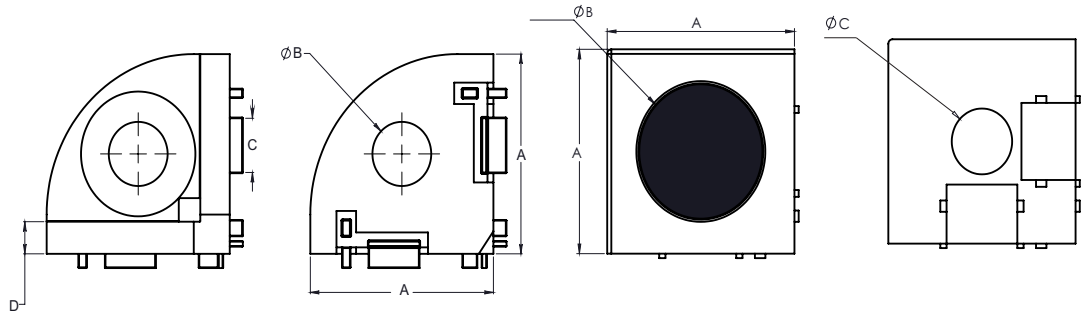
CONNECTING STRIP	SLOT	PART NUMBER
CONNECTING STRIP	10	ALCA20



**PROFILE CONNECTORS:**



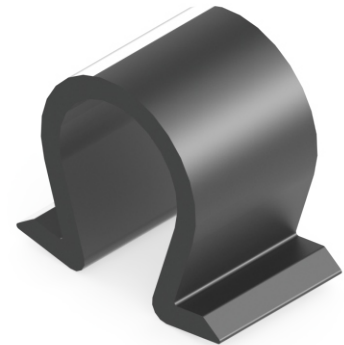
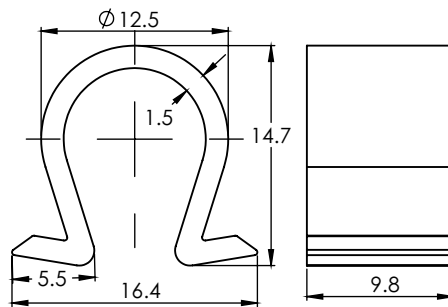
PROFILE CONNECTORS	A	B	C	D	PART NUMBER
3 WAY CONNECTOR CAST FOR 30X30	28.0	9.0	8.0	5.0	AL3WC
SQUARE COVER CAP 30 FOR 3 WAY CONNECTOR					AL3WCSC
ROUND COVER CAP 30 FOR 3 WAY CONNECTOR					AL3WRC
CUBIC CONNECTOR CAST FOR 20X20	20.0	24.0	6.2		AL20CC
CUBIC CONNECTOR CAST FOR 30X30	30.0	24.0	9.0		AL30CC
CUBIC CONNECTOR CAST FOR 40X40	40.0	24.0	8.5		AL40CC
CUBIC CONNECTOR CAST FOR 45X45	45.0	24.0	13.0		AL45CC



**CABLE CLIP**

MATERIAL: PLASTIC PP+PE

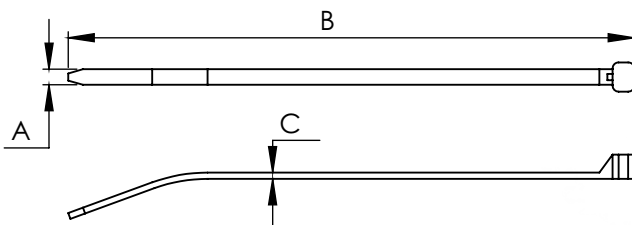
CABLE CLIP	SLOT	PART NUMBER
CABLE CLIP	8-11	ALCC



**CABLE TIE**

MATERIAL: NYLON PA

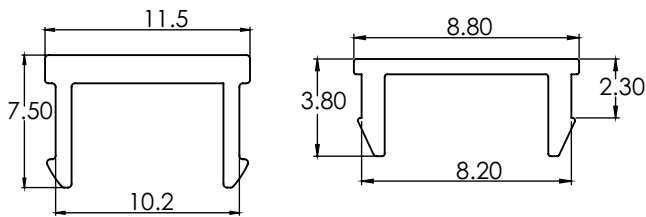
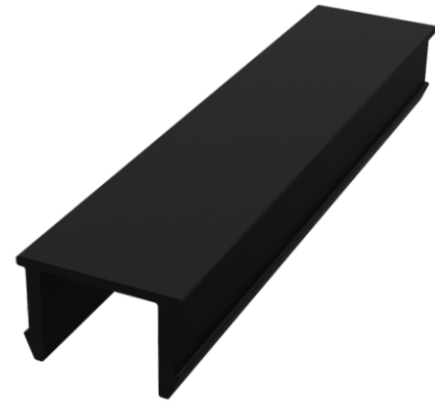
CABLE TIE	A	B	C	PART NUMBER
CABLE TIE SMALL	2.2	75.0	1.0	ALCTS
CABLE TIE LARGE	2.6	135.0	1.1	ALCTL



### COVER SLOT

MATERIAL: PLASTIC PP

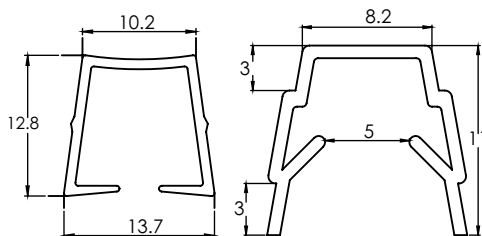
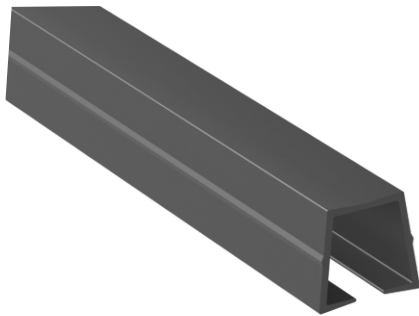
COVER SLOT	LENGTH	COLOR	PART NUMBER
COVER SLOT 08	2m	BLACK	ALCS08
COVER SLOT 08	2m	YELLOW	ALCSY08
COVER SLOT 08	2m	GREY	ALCSG08
COVER SLOT 08	2m	BLUE	ALCSB08
COVER SLOT 08	2m	ALUMINIUM	ALCSA08
COVER SLOT 10	2m	BLACK	ALCS10
COVER SLOT 10	2m	YELLOW	ALCSY10
COVER SLOT 10	2m	GREY	ALCSG10
COVER SLOT 10	2m	RED	ALCSR10
COVER SLOT 10	2m	ALUMINIUM	ALCSA10



### COVER AND REDUCTION

MATERIAL: PLASTIC PP

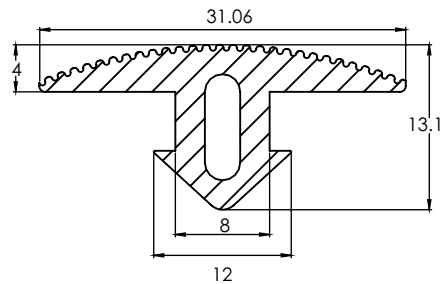
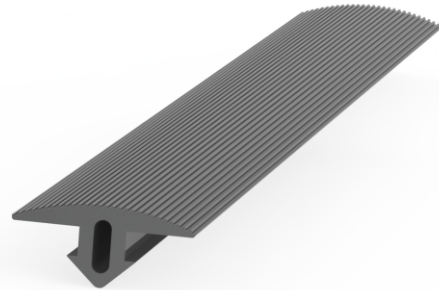
COVER AND REDUCTION	LENGTH	PART NUMBER
COVER AND REDUCTION SLOT 08	2mt	ALC&R08
COVER AND REDUCTION SLOT 10	2mt	ALC&R10



### COVER PROFILE

MATERIAL: PLASTIC NBR

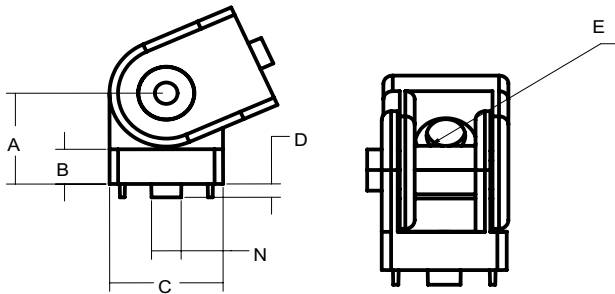
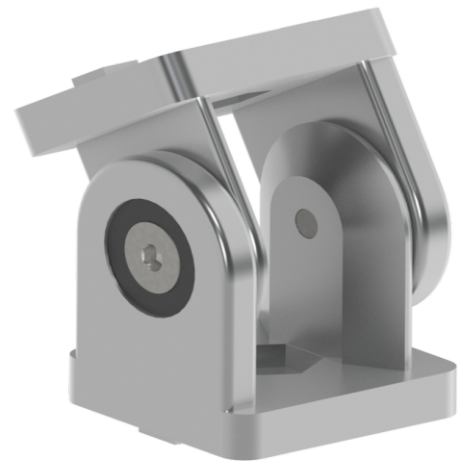
COVER PROFILE	LENGTH	SLOT	PART NUMBER
COVERPROFILE	20m	8	ALCP08



## PIVOT JOIN CONNECTORS

MATERIAL: DIE CAST ALUMINUM

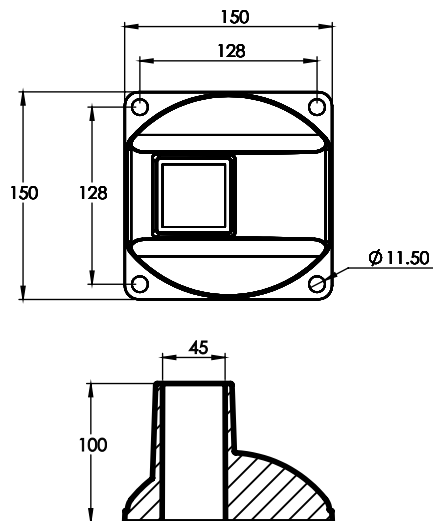
PIVOT JOIN CONNECTOR	PART NUMBER	SLOT	A	B	C	D	E
PIVOT JOIN CONNECTOR	ALPJC30	8	22.5	7.0	30.0	2.5	8.3
PIVOT JOIN CONNECTOR	ALPJC40	10	30.0	8.0	40.0	1.8	14.0
PIVOT JOIN CONNECTOR	ALPJC45	10	30.0	8.0	45.0	1.8	14.0
PIVOT JOIN CONNECTOR W/HANDLED	ALPJCH30	8	22.5	7.0	30.0	2.5	8.3
PIVOT JOIN CONNECTOR W/HANDLED	ALPJCH40	10	30.0	8.0	40.0	1.8	14.0
PIVOT JOIN CONNECTOR W/HANDLED	ALPJCH45	10	30.0	8.0	45.0 <td 1.8	14.0	



## FLOOR MOUNT BASE FOR 45 PROFILE

MATERIAL: DIE CAST ALUMINUM

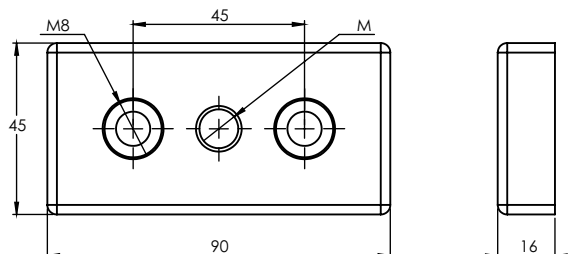
FLOOR MOUNT BASE	PART NUMBER
FLOOR MOUNT BASE	ALFLB45X45



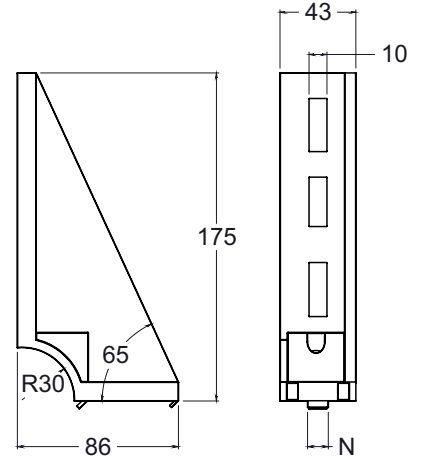
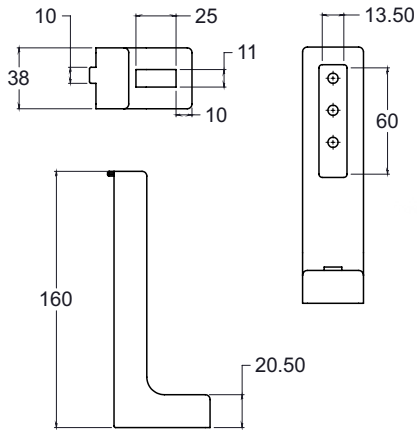
## TRANSPORT AND BASE PLATE

MATERIAL: DIE CAST ZINC

TRANSPORT AND BASE PLATE	M	PART NUMBER
TRANSPORT AND BASE PLATE 45X90	M16	ALTBP459016
TRANSPORT AND BASE PLATE 45X90	M20	ALTBP459020



## FLOOR TO FRAME CONNECTORS



### FLOOR TO FRAME

**MATERIAL: DIE CAST ZINC**

FLOOR LEVEL FRAME BLACK / ALFLBLACK

### FLOOR TO FRAME

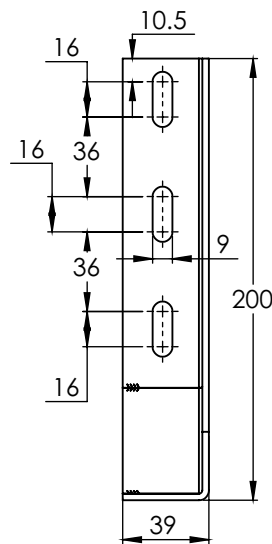
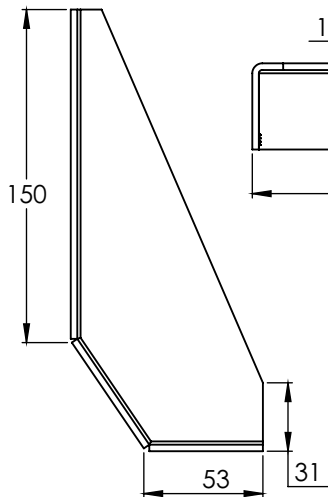
**MATERIAL: DIE CAST ALUMINUM**

FLOOR LEVEL FRAME CAST / ALFLFCAST

## FLOOR TO FRAME CAST BRACKET

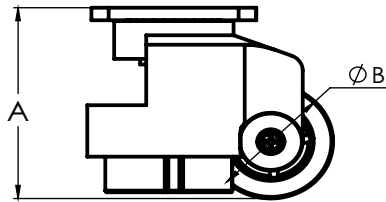
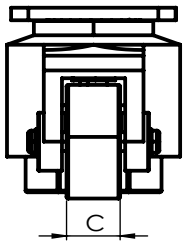
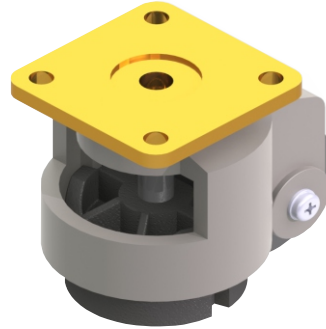
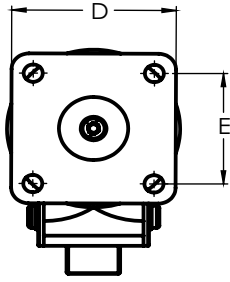
**MATERIAL: STEEL**

FLOOR TO FRAME CAST BRACKET	PART NUMBER
FLOOR TO FRAME CAST BRACKET	ALFTFB



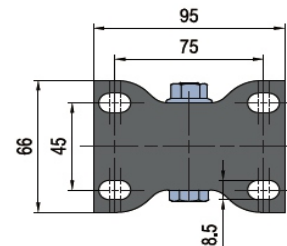
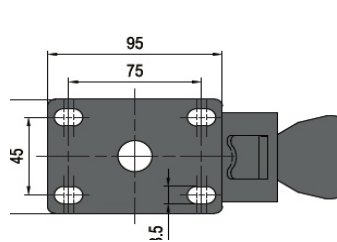
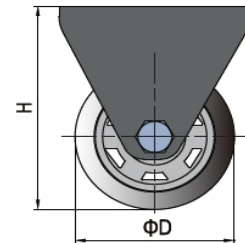
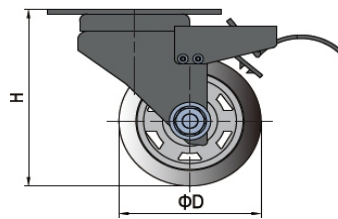
## CASTERS

LEVELING CASTER SQUARE PLATE	PART NUMBER	M	A	B	C	D
LEVELING CASTER HEX PLATE 2"	ALLCHP2	M12	82	50.8	24.2	
LEVELING CASTER HEX PLATE 2.5"	ALLCHP25	M12	101.9	63.5	28.9	
LEVELING CASTER HEX PLATE 3"	ALLCHP3	M16	119.8	76.2	30.1	
LEVELING CASTER SQUARE PLATE 2"	ALLCSP2	M6	82	50.8	24.2	73
LEVELING CASTER SQUARE PLATE 2.5"	ALLCSP25	M8	101.9	63.5	28.9	64.2
LEVELING CASTER SQUARE PLATE 3"	ALLCSP3	M10	119.8	76.2	30.1	95.25



## CASTERS

CASTER	PART NUMBER	D(mm)	H(mm)	LOAD/kgs
FIXED CASTER PLATE	ALFCP75	75.0	107.0	100.0
FIXED CASTER PLATE	ALFCP100	100.0	130.0	135.0
BRAKE CASTER PLATE	ALBCP75	75.0	107	100.0
BRAKE CASTER PLATE	ALBCP100	100.	130	135.0





## PROFILE END CAPS:

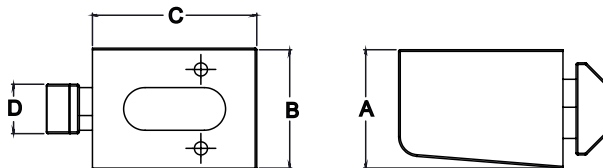
MATERIAL: NYLON PA

PROFILE END CAPS	PART NUMBER
PROFILE END CAP 20X20 mm	ALEC20
PROFILE END CAP 25X25 mm	ALEC25
PROFILE END CAP 30X30 mm	ALEC30
PROFILE END CAP 30X30R mm	ALEC30R
PROFILE END CAP 40X40 mm	ALEC40
PROFILE END CAP 40X80 mm	ALEC4080
PROFILE END CAP 45X45 mm	ALEC45
PROFILE END CAP 45X90 mm	ALEC4590
PROFILE END CAP 60X60 mm	ALEC60
PROFILE END CAP 90X90 mm	ALEC90

## PANEL MOUNTING BLOCK

MATERIAL: NYLON PP

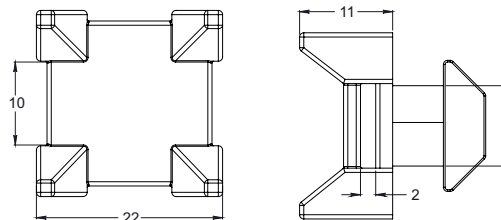
PANEL MOUNTING	PART NUMBER	A	B	C
PANEL MOUNTING 08 SLOT	ALPM08	18.5	18.5	SLOT 08
PANEL MOUNTING 10 SLOT	ALPM10	29.5	43.5	SLOT 10



## BLOCK CABLE

MATERIAL: NYLON PP

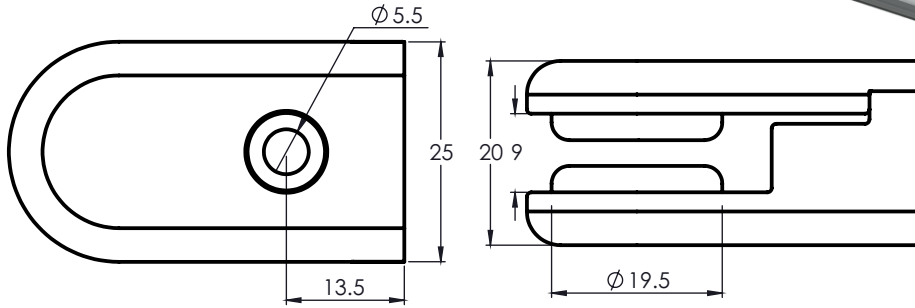
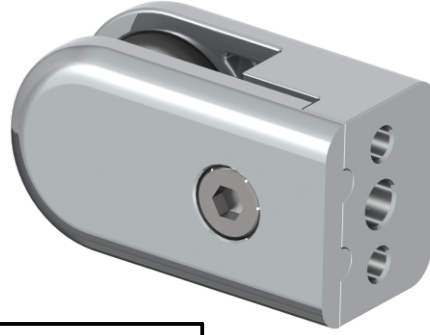
CROSS CABLE	PART NUMBER	N
CROSS CABLE	ALCC08	SLOT 08
CROSS CABLE	ALCC10	SLOT 10
UNIVERSAL CROSS CABLE	ALCCUNI	



## GLASS PANEL CLAMP

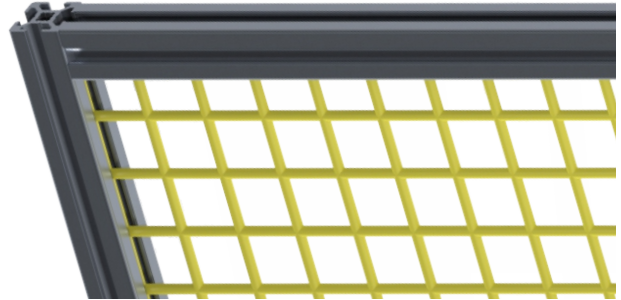
MATERIAL: DIE CAST ZINC

GLASS PANEL CLAMP	PART NUMBER
GLASS PANEL CLAMP	ALGPC



## EXPANDED METAL PANEL

EXPANDED METAL	PART NUMBER	W(FT)	H(FT)
METAL PANEL BLACK	ALMB1010	4	8
METAL PANEL YELLOW	ALMY1010	4	8
METAL PANEL BLACK	ALMB1010S	2	4
METAL PANEL YELLOW	ALMY1010S	2	4



## POLYCARBONATE SHEET

POLYCARBONATE	DIMENSION	PART NUMBER
POLYCARBONATE SHEET	1/4"x48"x96"	ALPS





LEVELING FEET



## FLOOR LEVEL FRAME

**MATERIAL: NYLON PA/DIE CAST ZINC**

BASE FOR SWIVEL FOOT	PART NUMBER
BASE FOR SWIVEL FOOT 45 mm PLASTIC	BFSF45P
BASE FOR SWIVEL FOOT 60 mm PLASTIC	BFSF60P
BASE FOR SWIVEL FOOT 45 mm STEEL	BFSF45S
BASE FOR SWIVEL FOOT 60 mm STEEL	BFSF60S



Se venden por separado. El threaded rod se adapta a cualquier base  
Sold separately. The threaded rod fits any base



## THREADED ROD FOR SWIVEL FOOT

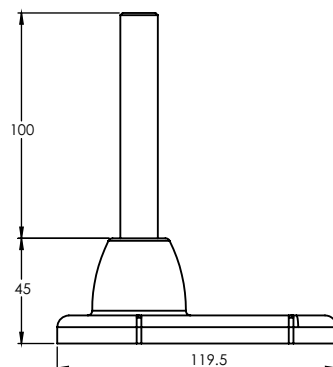
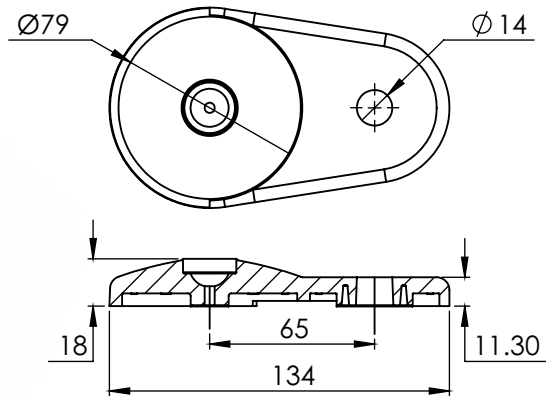
**MATERIAL: ZINC PLATED STEEL**

THREADED ROD FOR SWIVEL FOOT	PART NUMBER
THREADED ROD FOR SWIVEL FOOT M -10X45 mm	TRFS 1045
THREADED ROD FOR SWIVEL FOOT M -10X70 mm	TRFS 1070
THREADED ROD FOR SWIVEL FOOT M-12X45 mm	TRFSF1245
THREADED ROD FOR SWIVEL FOOT M -16X100 mm	TRFSF16100
THREADED ROD FOR SWIVEL FOOT M-16X125 mm	TRFSF16125
THREADED ROD FOR SWIVEL FOOT M -20X125 mm	TRFSF20125

## EXTENDED BASE

**MATERIAL: DIE CAST ZINC**

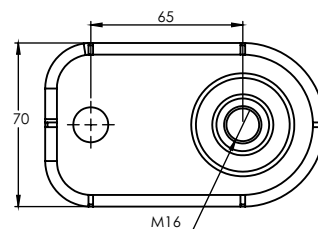
EXTENDED BASE	PART NUMBER
EXTENDED BASE	EBFSF80

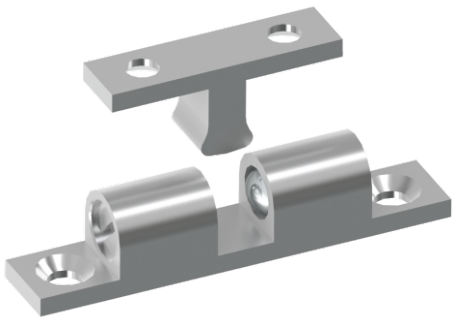


## DUCK FOOT

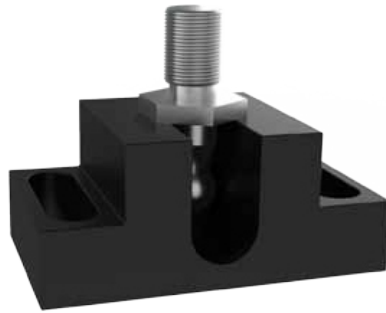
**MATERIAL: DIE CAST ALUMINUM**

DUCK FOOT M16X100	PART NUMBER
DUCK FOOT	ALDFSS16100





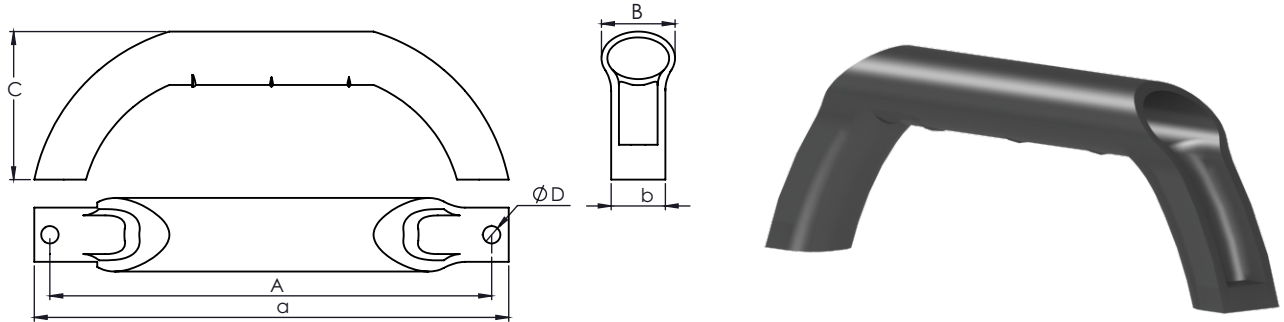
HINGE & FITTINGS



## COMFORT HANDLE

MATERIAL: NYLON PA

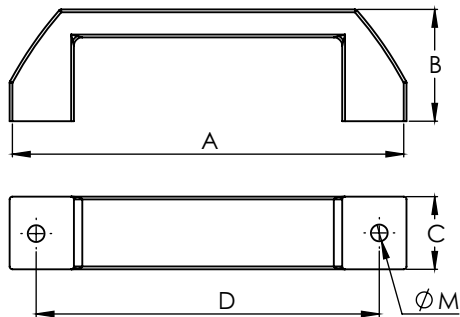
COMFORT HANDLE	PART NUMBER	A	a	B	b	C	D
COMFORT HANDLE 120	ALCH120	120.0	142.0	20.0	17.0	48.0	6.2
COMFORT HANDLE 160	ALCH160	160.0	188.0	30.0	27.0	60.0	8.2



## HANDLES

MATERIAL: NYLON PA

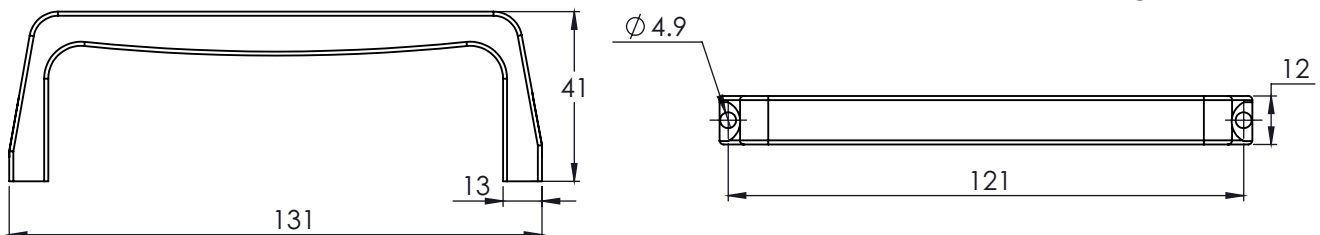
STANDARD HANDLE	PART NUMBER	A	B	C	D	M
MEDIUM HANDLE DE LUXE	ALHME	142.0	40.0	26.0	122.0	M6
BRIDGE HANDLE	ALPM10	170.0	52.0	28.0	152.0	M6



## FRONT HANDLE 121

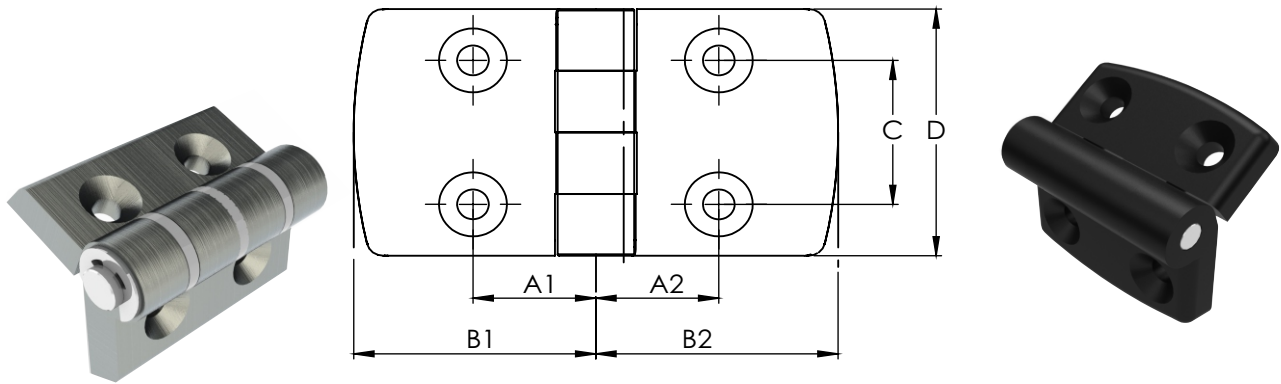
MATERIAL: NYLON PA

FRONT HANDLE	PART NUMBER
FRONT HANDLE	ALFH121



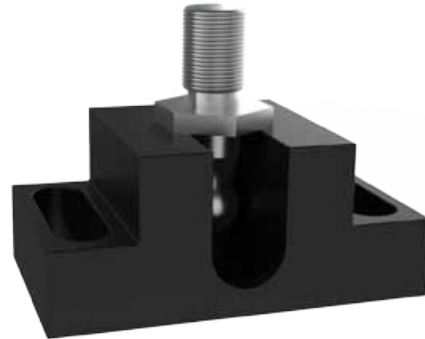
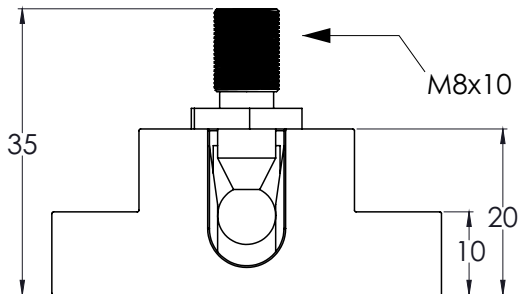
## DOOR HINGES

DOOR HINGES	MATERIAL	PART NUMBER	A1	A2	B1	B2	C	D
STANDARD HINGE 20X20	PLASTIC	ALSH2020P	17.5	17.5	29.5	29.5	28.0	48.0
STANDARD HINGE 25X25	PLASTIC	ALSH2525P	15.0	15.0	26.0	26.0	28.0	48.0
STANDARD HINGE 30X30	PLASTIC	ALSH3030P	17.5	17.5	29.5	29.5	28.0	48.0
STANDARD HINGE 30X30	ALUMINUM	ALSH3030A	17.5	17.5	29.5	29.5	28.0	48.0
STANDARD HINGE 30X40	PLASTIC	ALSH3040P	17.5	22.5	29.5	38.5	28.0	48.0
STANDARD HINGE 30X45	PLASTIC	ALSH3045P	17.5	25.0	29.5	43.5	28.0	48.0
STANDARD HINGE 30X45	ALUMINUM	ALSH3045A	17.5	25.0	29.5	43.5	28.0	48.0
STANDARD HINGE 40X40	ALUMINUM	ALSH4040A	22.5	22.5	38.5	38.5	28.0	48.0
STANDARD HINGE 40X60	PLASTIC	ALSH4060P	32.5	22.5	57.5	38.5	28.0	48.0
STANDARD HINGE 45X45	PLASTIC	ALSH4545P	25.0	25.0	43.5	43.5	28.0	48.0
STANDARD HINGE 45X45	ALUMINUM	ALSH4545A	17.5	17.5	29.5	29.5	28.0	48.0
STANDARD HINGE 45X60	PLASTIC	ALSH4560P	32.5	25.0	57.5	43.5	28.0	48.0
STANDARD HINGE 30X60	PLASTIC	ALSH3060P	17.5	32.5	29.5	57.5	28.0	48.0



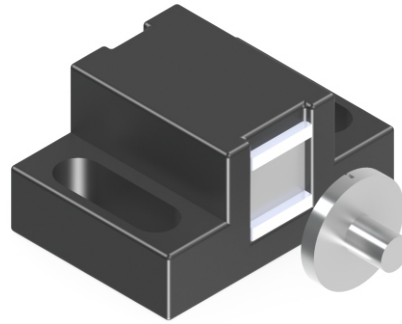
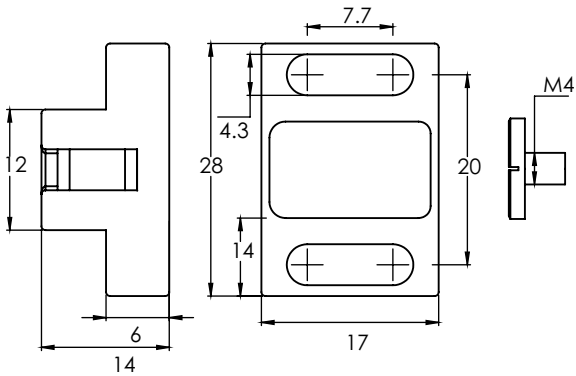
## BALL CATCH

BALL CATCH	PART NUMBER
BALL CATCH	ALBC



## MAGNETIC CATCH

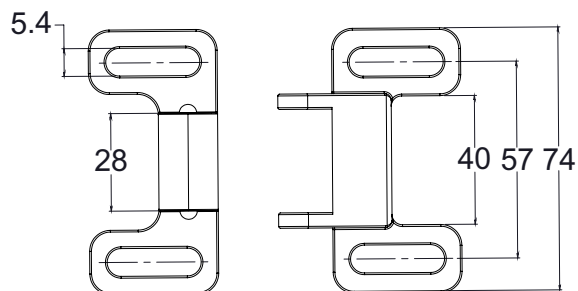
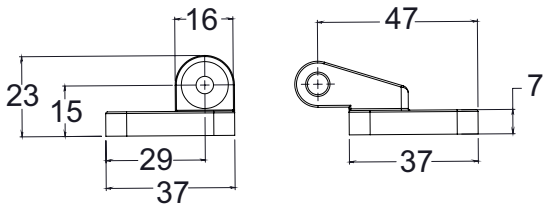
MAGNETIC CATCH	PART NUMBER
MAGNETIC CATCH	



## DOUBLE BALL CATCH

MATERIAL: NYLON PA

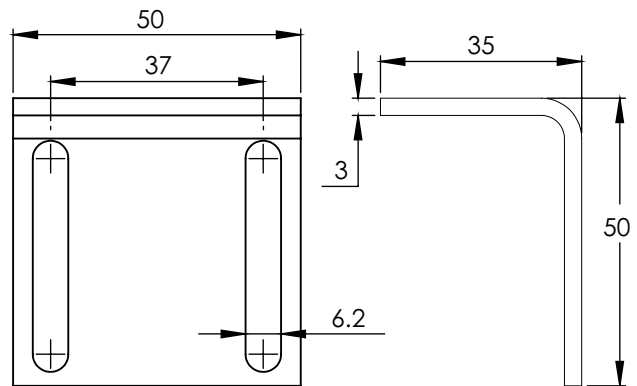
DOUBLE BALL CATCH	PART NUMBER
DOUBLE BALL CATCH	ALDBC



## DOUBLE BALL CATCH BRACKET

MATERIAL: STEEL

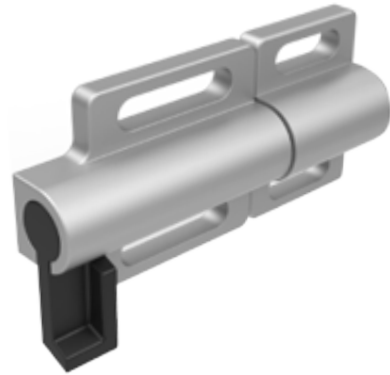
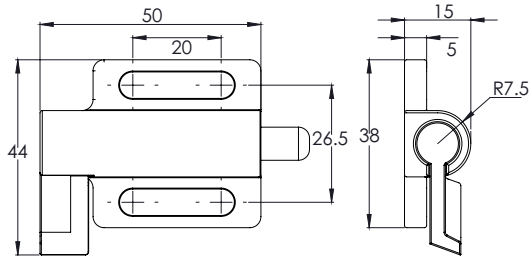
DOUBLE BALL CATCH BRACKET	PART NUMBER
DOUBLE BALL CATCH BRACKET	ALDCB



**DOOR LATCH**

MATERIAL: DIE CAST ZINC

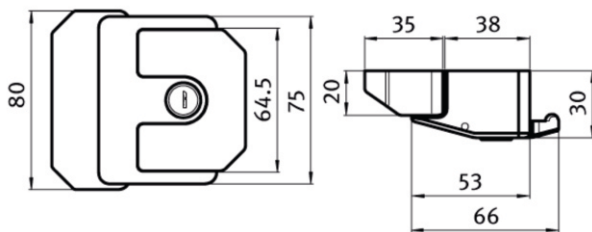
DOOR LATCH	PART NUMBER
DOOR LATCH	ALDL



**LATCH**

MATERIAL: DIE CAST ZINC

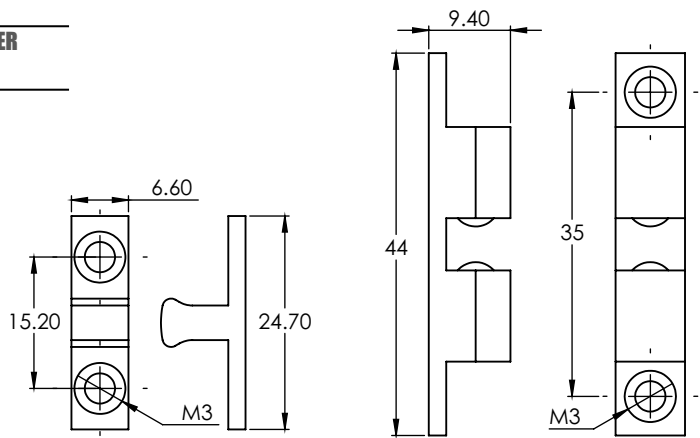
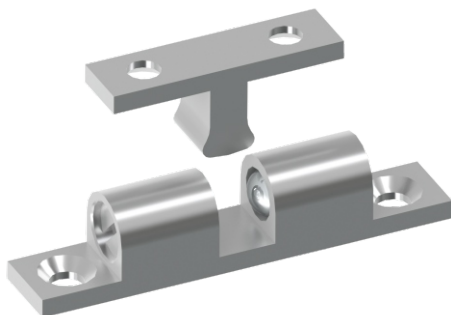
LATCH	PART NUMBER
LATCH W/KEY	ALLLWK



**DOUBLE BALL CATCH MS**

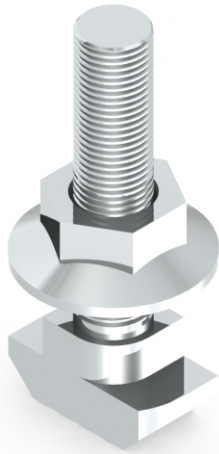
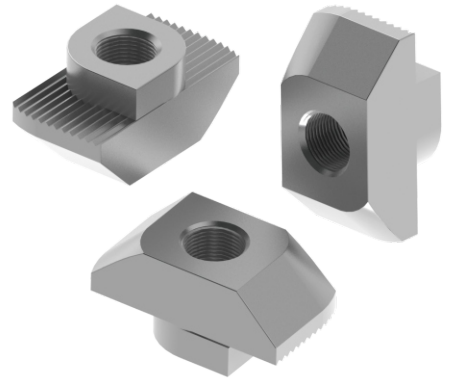
MATERIAL: STAINLESS STEEL

DOUBLE BALL CATCH MS	PART NUMBER
DOUBLE BALL CATCH MS	ALDBMS





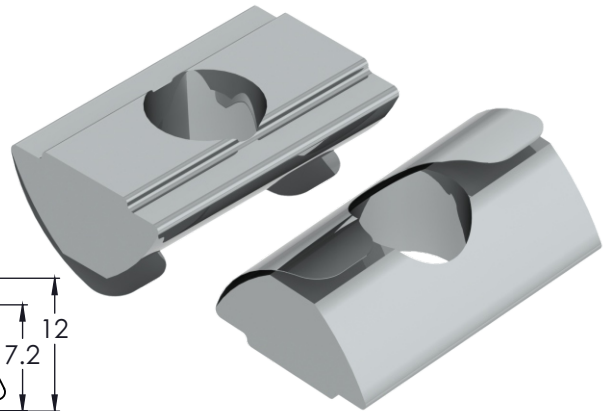
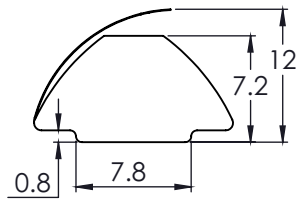
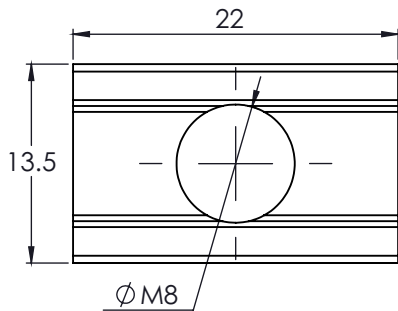
SLOT NUTS



## ROLL IN T NUT WITH LEAF

MATERIAL: ZINC PLATED STEEL

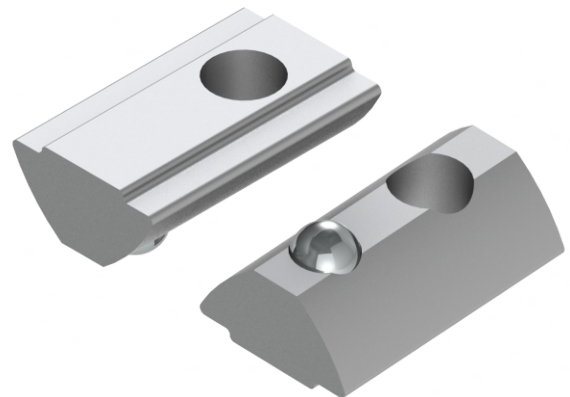
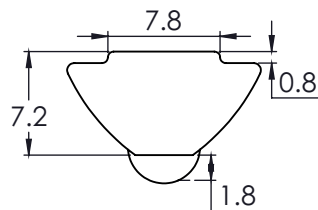
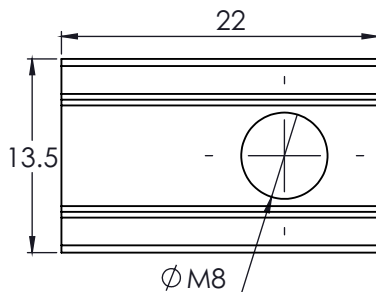
ROLL IN T NUT	SLOT	PART NUMBER
ROLL IN T NUT	10	ALRTNL10



## ROLL IN T NUT WITH BALL

MATERIAL: ZINC PLATED STEEL

ROLL IN T NUT	SLOT	PART NUMBER
ROLL IN T NUT	10	ALRTNB10



## SELF FORMING SCREW

MATERIAL: ZINC PLATED STEEL

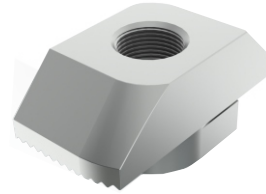
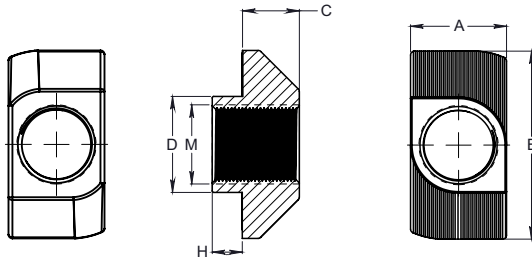
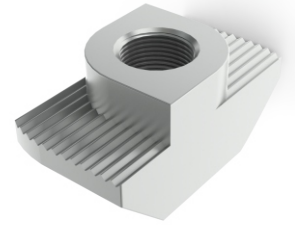
SELF FORMING SCREW	PART NUMBER
S12x30	ALSFS1230
S10x30	ALSFS1030
S8x25	ALSFS0820
S6X20	ALSFS0620



**T-NUT:**

**MATERIAL: STEEL**

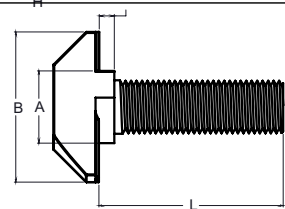
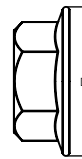
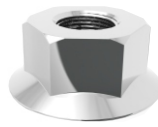
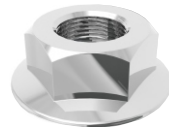
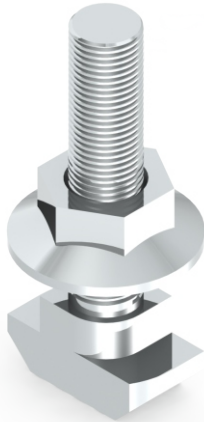
T-NUT STEEL	PART NUMBER	M	H	A	B	C	D
T-NUT 6 SLOT M4	ALTN06M4	M-4	1.0	5.7	11.5	3.2	5.7
T-NUT 8 SLOT M6	ALTN08M6	M-6	1.5	7.7	16	4.5	7.7
T-NUT 10 SLOT M6	ALTN10M6	M-6	3.0	9.7	19	5.8	9.7
T-NUT 10 SLOT M8	ALTN10M8	M-8	3.0	9.7	19	5.8	9.7



**T-BOLT AND HEX NUTS:**

**MATERIAL: STEEL**

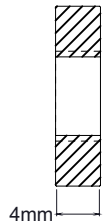
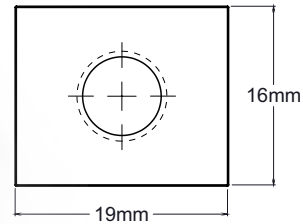
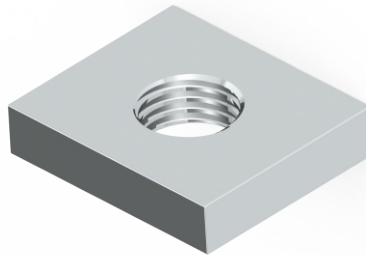
T-BOLT STEEL	PART NUMBER	M	H	A	B	C	D	L
T-BOLT 8 SLOT M6	ALTB08M6	M-6	3.0	7.7	16.0	7.7		20.0
T-BOLT 10 SLOT M8	ALTB10M8	M-8	3.0	9.7	19.0	9.7		25.0
HEX NUT M6	ALHNM6	M-6	6.0				14.0	
HEX NUTM8	ALHNM8	M-8	8.0				21.0	



**SQUARE NUT**

**MATERIAL: ZINC PLATED STEEL**

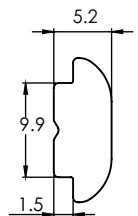
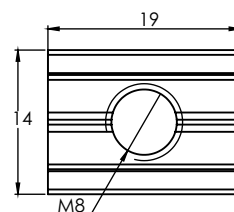
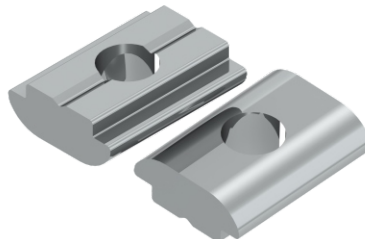
SQUARE NUT	PART NUMBER
SQUARE NUT M6	ALSNM6
SQUARE NUT M8	ALSNM8



**ROLL IN T NUT**

**MATERIAL: ZINC PLATED STEEL**

ROLL IN T NUT, STEEL	SLOT	PART NUMBER
ROLL IN T NUT	10	ALRTN10





**ALDER**  
ALUMINIOS Y DERIVADOS

DISTRIBUTED BY

