



ESPECIALISTAS EN CIMENTACIONES S.A DE C.V.

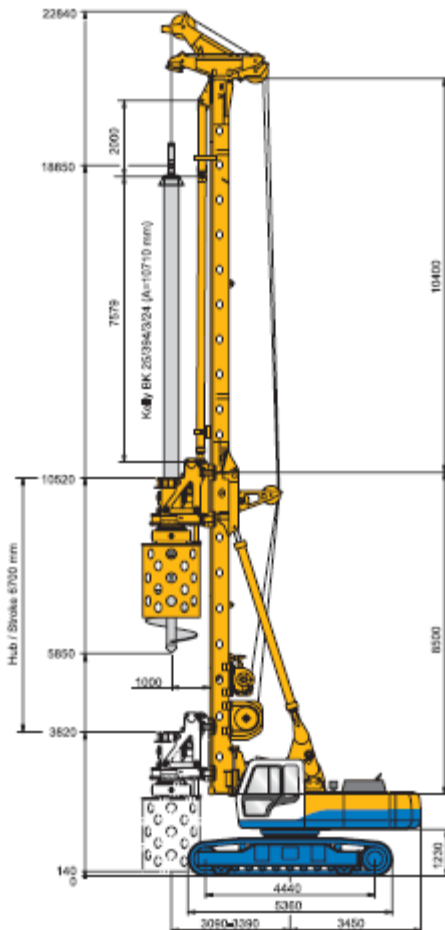
CALIDAD

CUMPLIMIENTO

SERVICIO

CONFIANZA

SOLUCIONES



BAUER BG 25 C

www.cimentacionespro.com

ESPECIALISTAS EN CIMENTACIONES S.A DE C.V.

Technical specifications

技术参数

		Crowd Winch 挤压卷扬式	Crowd Cylinder 油缸加压式
Overall height	总高度	22.836 mm	22.836 mm
Operating weight (approx.) (with Kelly BK25/394/4/50)	工作重量 (大约) (采用钻杆 BK25/394/4/50)	74.000 kg	74.000 kg
Rotary Drive	动力头	KDK245K	KDK245K
Torque at 320 bar (nominal)	扭矩 (系统压力为 32 MPa 时的理论值)	245 kNm	245 kNm
Speed of rotation (max.)	最大转速	37 U/min (RPM)	37 U/min (RPM)
Crowd system	加压系统		
Crowd pressure / pull (effective)	有效加压压力 / 拉力	280 / 260 kN	200 / 260 kN
Stroke (Kelly system)	动力头行程 (凯氏系统)	8.145 mm	6.700 mm
Stroke (CFA system)	动力头行程 (长螺旋系统)	15.800 mm	15.800 mm
Speed (down/up)	速度 (下降 / 提升)	1,8 / 1,8 m/min	1,7 / 2,4 m/min
Fast speed (down/up)	高速 (下降 / 提升)	15,5 / 15,5 m/min	20 / 20 m/min
Main winch	主卷扬		
Winch classification	卷扬等级	M6 / L3 / T5	M6 / L3 / T5
Line pull (1st layer) effective/nominal	单绳拉力 (第一层) 有效值 / 理论值	200 kN / 250 kN	200 kN / 250 kN
Rope diameter / Length	钢丝绳直径 / 长度	28 mm / 88 m	28 mm / 88 m
Line speed (max.)	最大提升速度	80 m/min	80 m/min
Auxiliary winch	副卷扬		
Winch classification	卷扬等级	M6 / L3 / T5	M6 / L3 / T5
Line pull (1st layer) effective/nominal	单绳拉力 (第一层) 有效值 / 理论值	80 kN / 100 kN	80 kN / 100 kN
Rope diameter / Length	钢丝绳直径 / 长度	20 mm / 50 m	20 mm / 50 m
Line speed (max.)	最大提升速度	46 m/min	46 m/min
Mast inclination	钻桅倾斜度		
Backward / forward / lateral	向后 / 向前 / 左右	15° / 5° / 5°	15° / 5° / 5°

Base carrier BH 70

主机 BH 70



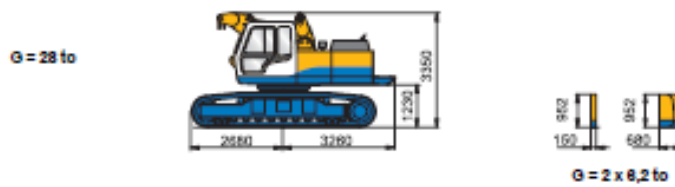
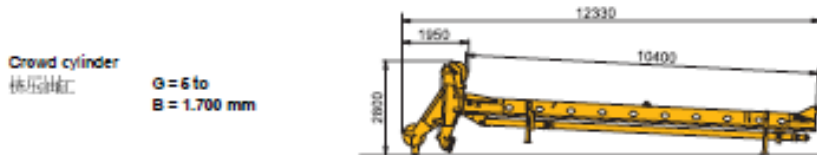
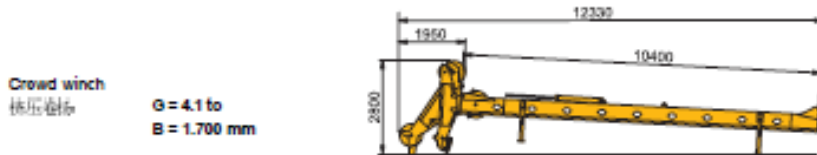
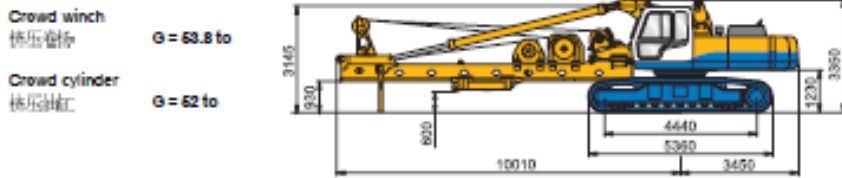
Engine	发动机	Cummins 康明斯 C 8.3 C
Rated output ISO 3046-1	额定功率 ISO 3046-1	194 kW @ 2.200 U/min (rpm)
Engine conforms to Exhaust Emission standards	发动机排放符合标准	EEC / 68EC Stage 1 and EPA / CARB TIER 1
Diesel tank	柴油油箱容量	500 l
Ambient air temperature (at full power)	环境温度 (全功率)	up to not > 40°C
Sound pressure level in cabin (EN 791, Annex A)	驾驶室噪音	L ₉₀ 76 dB(A)
Sound power level (2000/14/EG u. EN 791, Annex A)	全功率噪音	L ₉₀ 112 dB(A)
Hydraulic system	液压系统	2-hydraulic circuit system for drilling 钻机采用双液压回路系统
Hydraulic pressure	液压系统压力	320 bar
Flow rates (main circuits)	流量 (主回路)	2 x 210 l/min
Hydraulic oil tank capacity	液压油箱容量	285 l
Undercarriage (Retractable crawler frames)	下车 (收放可伸缩式结构)	UN 65
Crawler type	履带型式	Typ B 60
Track width (retracted/extended)	履带宽度 (收放 / 伸展)	2.500 / 3.700 mm
Overall width of crawlers (retracted/extended)	总宽度 (收放 / 伸展)	3.200 / 4.400 mm
Width of triple grouser track shoes	三路式履带鞋宽度	700 mm
Overall length of crawlers	履带总长度	5.358 mm
Traction force effective/nominal	牵引力 有效值 / 理论值	410 / 520 kN
Travel speed	行走速度	1,3 km/h

www.cimentacionespro.com

ESPECIALISTAS EN CIMENTACIONES S.A DE C.V.

Transport data

运输参数



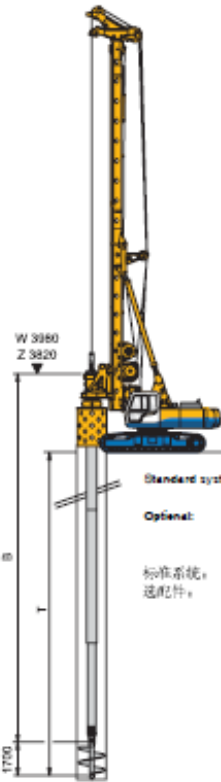
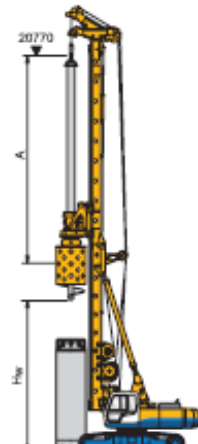
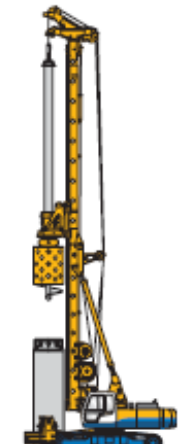
BQ 25C - Rotary Drilling Rig

BQ 25C - 大口径旋挖钻机

ESPECIALISTAS EN CIMENTACIONES S.A DE C.V.

Applications
应用

Kelly drilling system
凯式钻杆钻探系统

Standard system:
Uncased drilling or installation of casing with rotary drive

Optional:
Installation of casing with hydraulic exciter attached to the drilling rig

标准系统:
及配件:

泥浆护壁钻孔或用动力头下护筒
采用安装在钻机上的液压管机下护筒

Optional equipment:
选配设备:

Attachment of hydraulic exciter
搭配液压管机
BV 1180 HD-03

Type of Kelly bar 钻杆型号	A (m) (米)	B (m/m) (米)	Weight (kg/公 斤)	Cread winch 桥压卷扬		Cread cylinder 桥压油缸	
				Hw (m) (米)	T (m) (米)	Hw (m) (米)	T (m) (米)
BK 25/364/3/24	27,20			5,85		24,95	
BK 25/364/3/27	10,71	30,20	4.700	5,85	25,10	7,30	27,95
BK 25/364/3/30	11,71	33,20	5.120	5,75	28,10	6,75	30,95
BK 25/364/3/36	12,71	39,20	5.530	3,75	31,10	5,75	36,95
BK 25/364/4/30	14,71	43,47	6.350	5,75	37,10	3,75	41,20
BK 25/364/4/50	12,71	53,97	7.730	3,65	41,35	5,75	51,62
BK 25/364/4/56	15,21	59,47	9.150	1,75	51,77	3,65	57,20
	16,71		10.050			57,35	1,75

Drilling diameter		钻孔直径	
Uncased	泥浆护壁钻孔	1.700 mm	1.900 mm
Cased	全护筒钻孔	1.400 mm	1.600 mm

Length of casing sections		单节护筒长度	
without casing exciter	无管管机	Hw - 0,5 m	Hw - 0,5 m
with casing exciter	有管管机	Hw - 1,5 m	Hw - 1,5 m

For further details on the acquisition of drilling data please refer to "Kelly Bar: 905.518.1"

如需更多钻孔信息参见“凯式钻杆 905.518.1”

BQ 25C - Rotary Drilling Rig
BQ 25C - 大口径旋挖钻机

e-mail: cimentacionespro@hotmail.com

Cel. 044 55 2116-9862

www.cimentacionespro.com