



NGSP (National Glycohemoglobin Standardization Program)
IFCC (International Federation of Clinical Chemistry)

Labona Check™ A1c

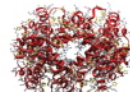
Laboratory Compatible HbA1c (Glycohemoglobin)



Tiny drop of blood
using capillary tube



Immediate results
available within 7 sec.
(Total Assay Time : 3 min.)



High quality boronic acid
affinity principle

Talking Analyzer



Model : MH 200

Rapid
Cost-Effective
Precise and Accurate

Labona Check™ A1c

HbA1c Analyzer

Key Features of Analyzer

3.5" Full Color Touch Screen

High resolution GUI (graphic user interface)



Voice Guide & Instruction

Guide to procedures for accurate testing



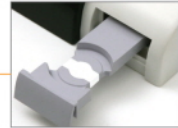
Model : MH 200

Built-in Thermal Printer

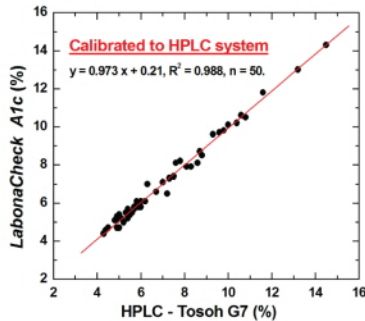
Easy management



Automatic Tray Loading



Clinical Evaluation



Features

- Full Color Touch Screen
- Voice Guide & Instruction
- Built-in Thermal Printer

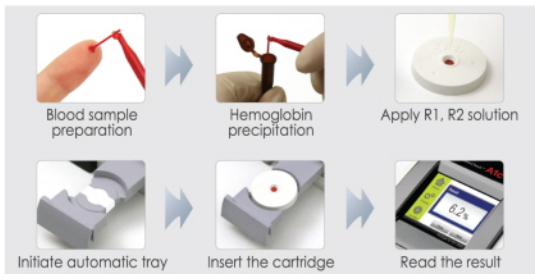
Performance

- Methodology : Boronic Acid Affinity
- Sample Volume : Whole Blood, 5 µl
- Measurement Range : 4 ~ 15 %

Specifications

Display and User Interface	Touch Screen(3.5inch)
Total Assay Time	Less Than 3 Minutes
Measurement Time	7 Seconds
Measuring Method	Optical Reflectance
Memory	300 Test Results
Unit	Either % or mmol/mol
Operation Condition	Temp. : 15 ~ 35 °C / Humi. : 15 ~ 75 %
Printing Method	Direct Thermal Line Printing
Dimensions	178 x 195 x 75(mm)
Weight	730 g(Exclude Adapter)

Test Procedure



What is HbA1c?

HbA1c also known as hemoglobin A1c, glycated hemoglobin, is a minor hemoglobin component that are adducts formed from hemoglobin and various sugars (glucose). It is a reflection of the mean blood glucose levels during the last 6-12 weeks so the HbA1c test is an important blood test used to determine how well the diabetes is being controlled.

Is there a relation between % HbA1c and glucose?

Yes, studies have shown that the level of glycohemoglobin (HbA1c) is an index of mean blood glucose over the preceding 120 days. The mean glucose (MPG) and HbA1c has been established by linear regression analysis using data (n=1441) from the DCCT study the relationship may be used to estimate MPG over the last 90 days and may be used to set up day to day target based on HbA1c goals. (DCCT Diabetes Control and Complications Trial)

What is the normal HbA1c value?

The recommended target of 6.5 % now corresponds to a value of 48 mmol/mol. If you have diabetes and your HbA1c is below the target of 6.5 % of the total amount of hemoglobin in the blood it is likely that your diabetes is in good control. However, if your HbA1c rises above 6.5 %, you are at increased risk of developing long term complications such as eye disease, kidney disease or nerve damage.

Accessories



- R1 / Reagent 30 tubes x 0.2 mL
- R2 / Reagent 1 vial x 2.0 mL
- Cartridge 30 units
- Printer Paper
- Pipette tips 1000 pcs/pack
- Pipette 25 µl 1ea
- Capillary tube 5 µl 200 pcs/vial
- Capillary tube holder 1 ea
- Control Solution 1 x 1.5 mL
- Control Solution 2 x 1.5 mL

CERAGEM MEDISYS

www.ceragemmedisys.com

Ste. # 103-703, SK Ventium, 522 Dangjeong-dong, Gunpo-si, Gyeonggi-do, 435-776, Republic of Korea
E-mail. sales@ceragemmedisys.com

GENERAL DE APARATOS ANALÍTICOS MÉDICOS SA DE CV



Av. Rio Blanco No. 779 C.P. 45130
Fracc. Mirador de San Isidro, Zapopan, Jal.
e-mail: ventas@gaamsa.com
01-800-111-8899 / 01-800-654-1673